

The Question of Land, Livelihoods and Poverty in the Countryside



UTSA PATNAIK

Jawaharlal Nehru University

Chart 1a Sectoral Output and GDP per Head, India 1981-2 to 2005-6



Sectoral Output per Head and GDP per Head, 1981-2 to 2005-6, Rupees in constant 1999-00 prices

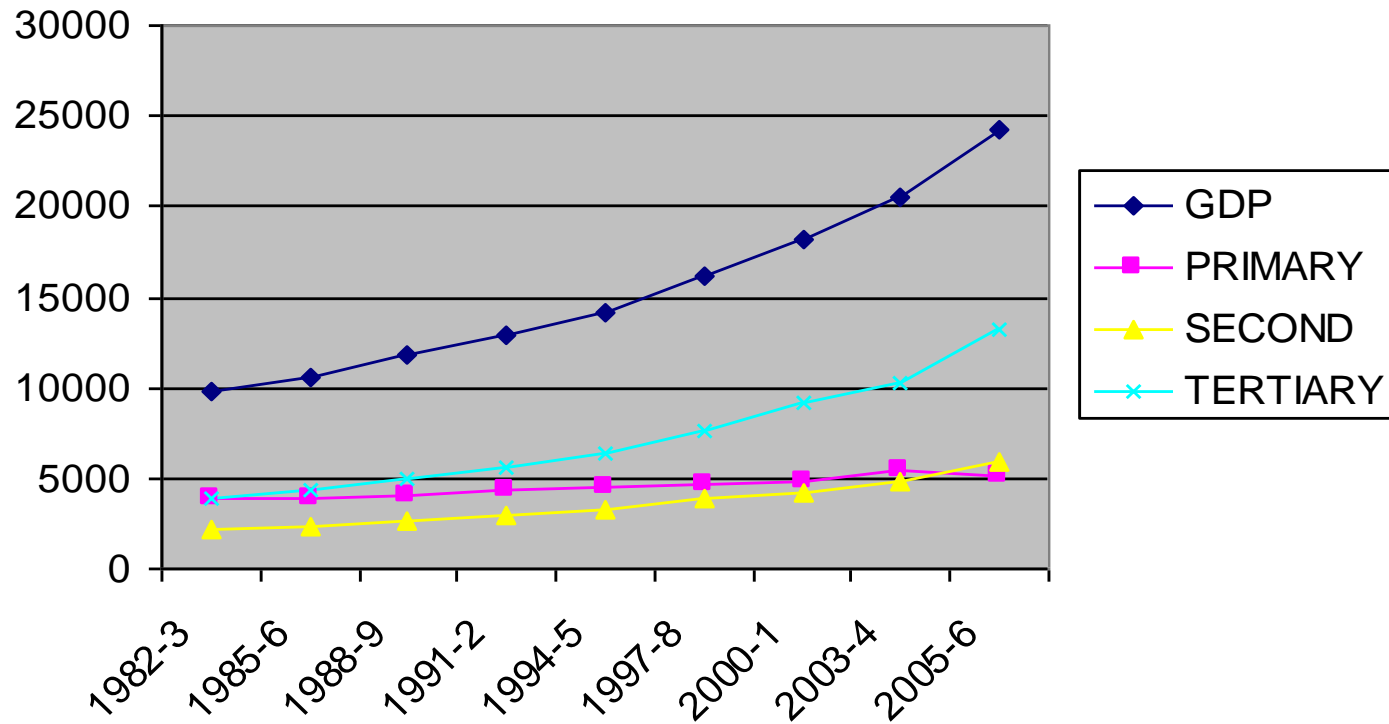


Chart 1b Sector shares in GDP in India 1981-2 to 2005-6 (at 1999-00 prices)

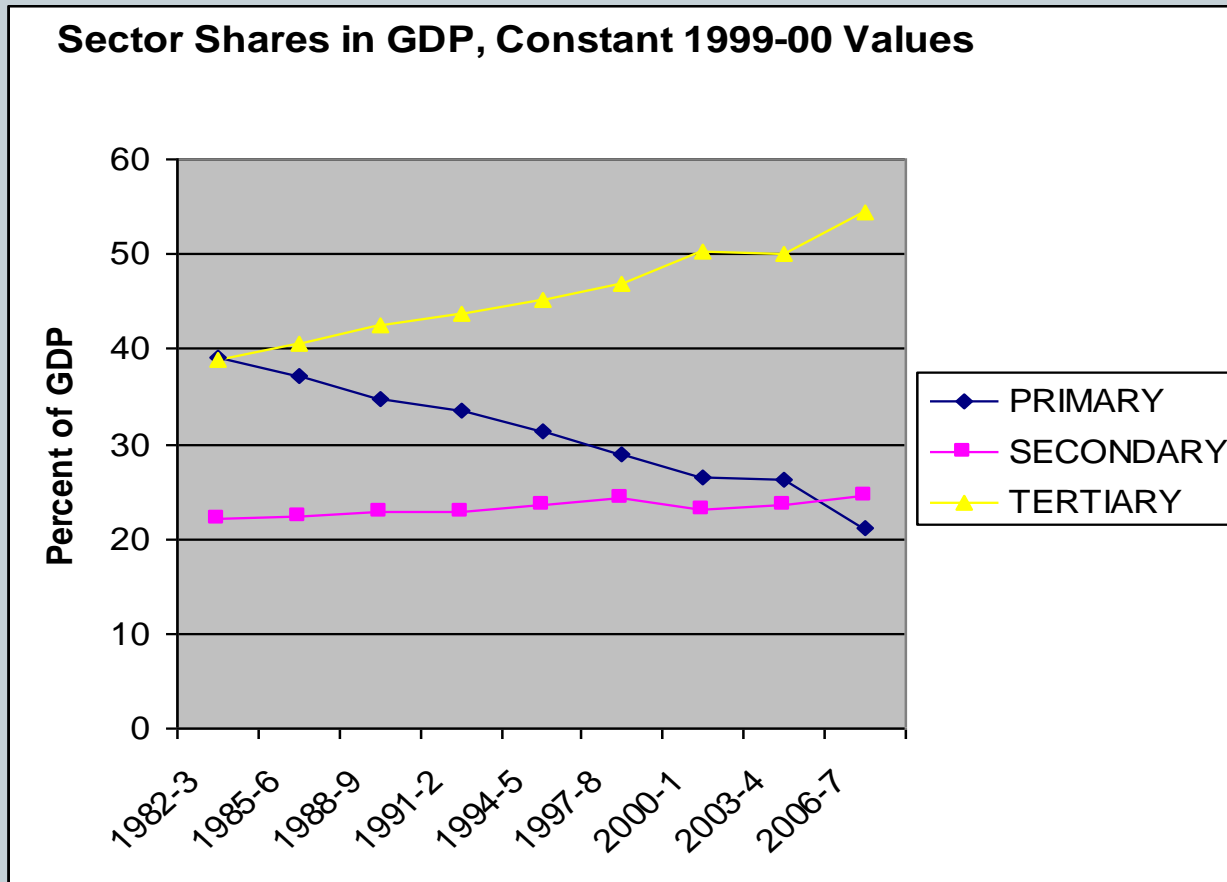


Chart 2a Annual Growth Rate per decade of Central Govt. Development and Total Expenditure, 1970-79 to 1990-99

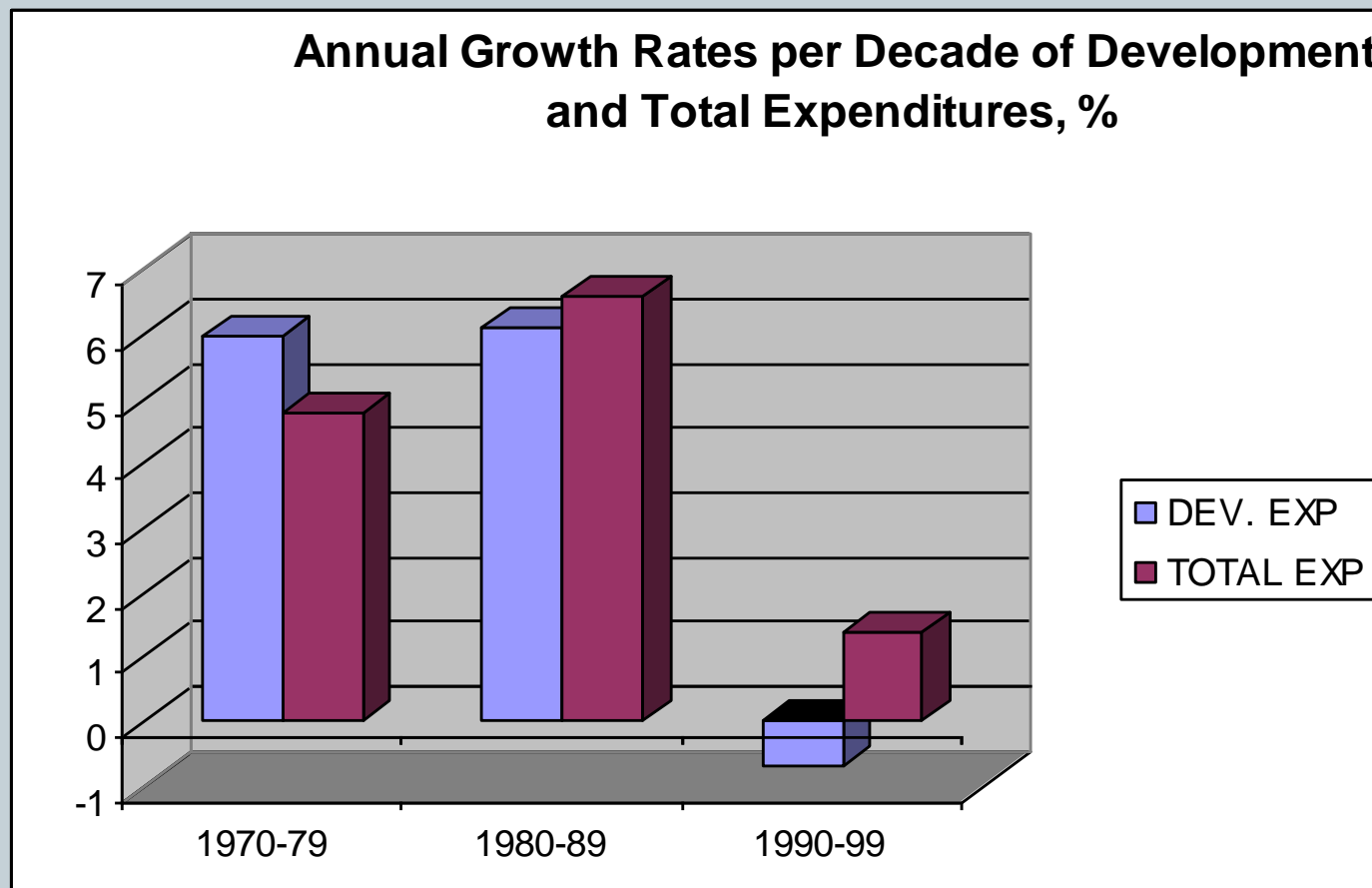


Chart 2b Annual Growth Rate of Spending on Economic and Social Services by States, 1972-79 to 1990-1999



Annual Growth rates per Decade of Spending on Economic and Social Services by States 1972 to 1999

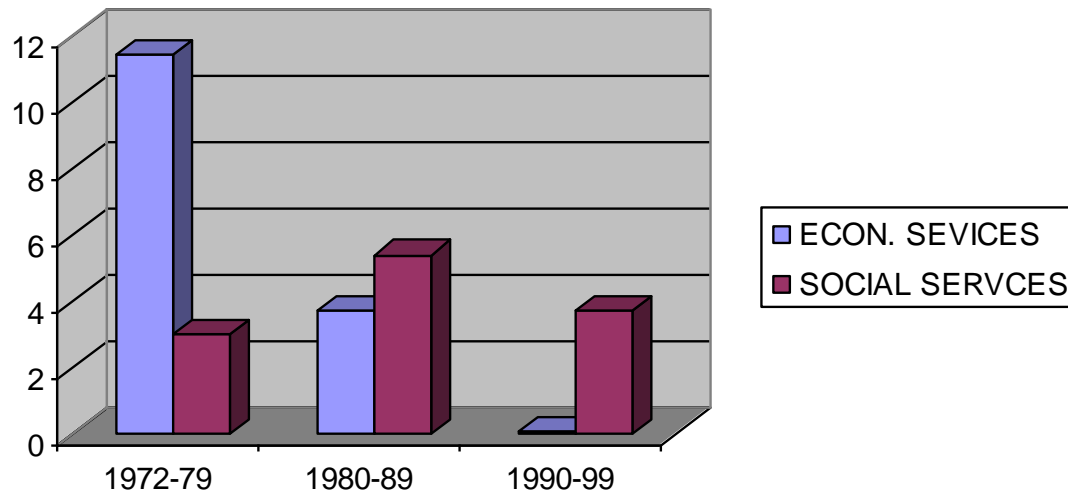


Chart 2c Decline in Rural Development Spending, 1985-90 to 2003-4



**Rural Development Expenditure and
Infrastructure Expenditure as Percent of NNP
under Economic Reforms**

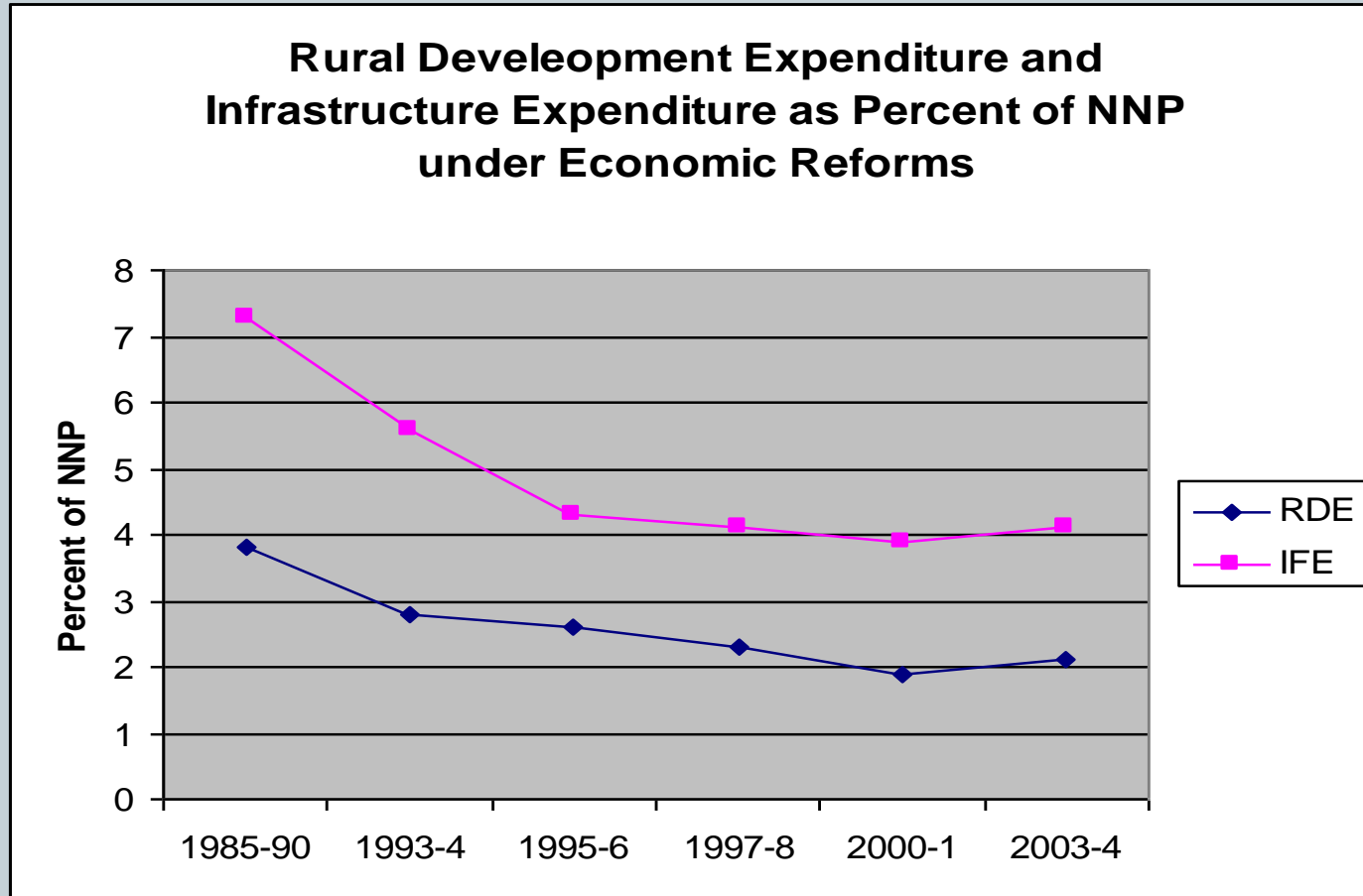


Chart 3a Unemployment Rates 1993-4 and 2009-10, All-India Rural, Female Workers

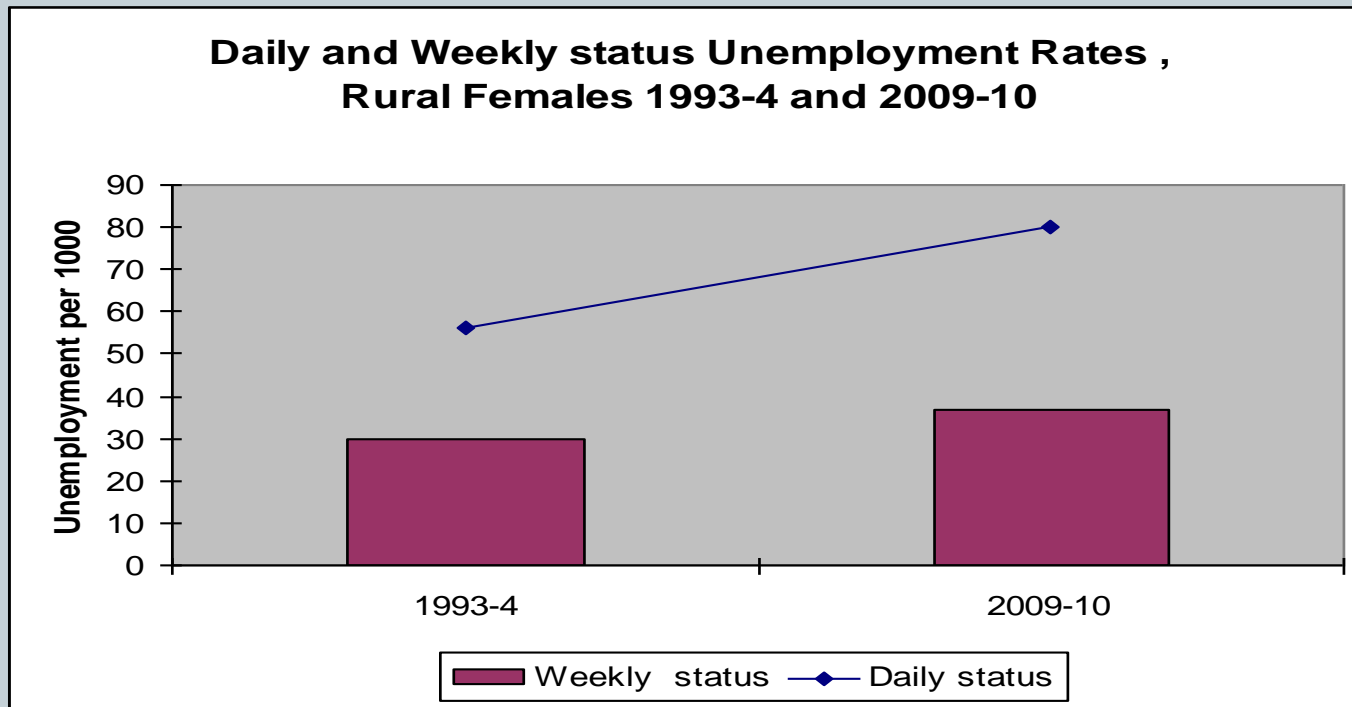


Chart 3b. Unemployment Rates during 1993-4 and 2009--10, All-India Rural, Male Workers

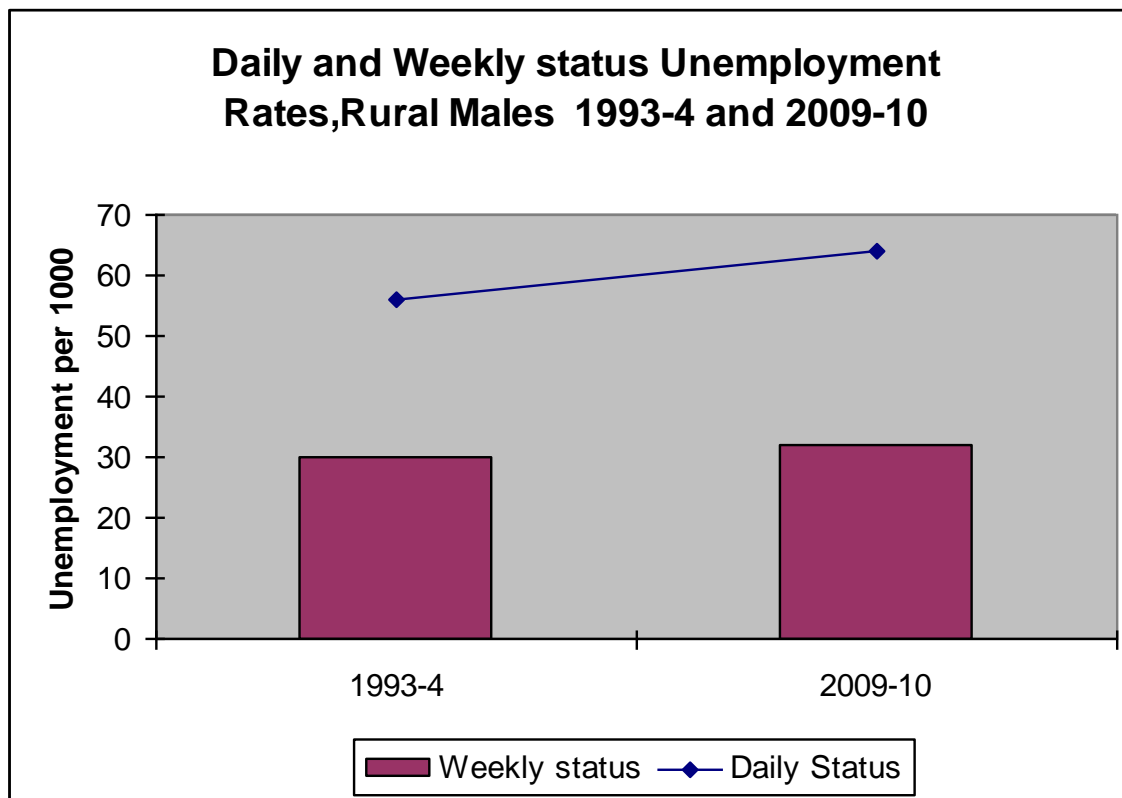


Chart 4a Food grains output and Availability, India 1899-1990



Foodgrains Output and Availability per Capita, 1897 to 1990

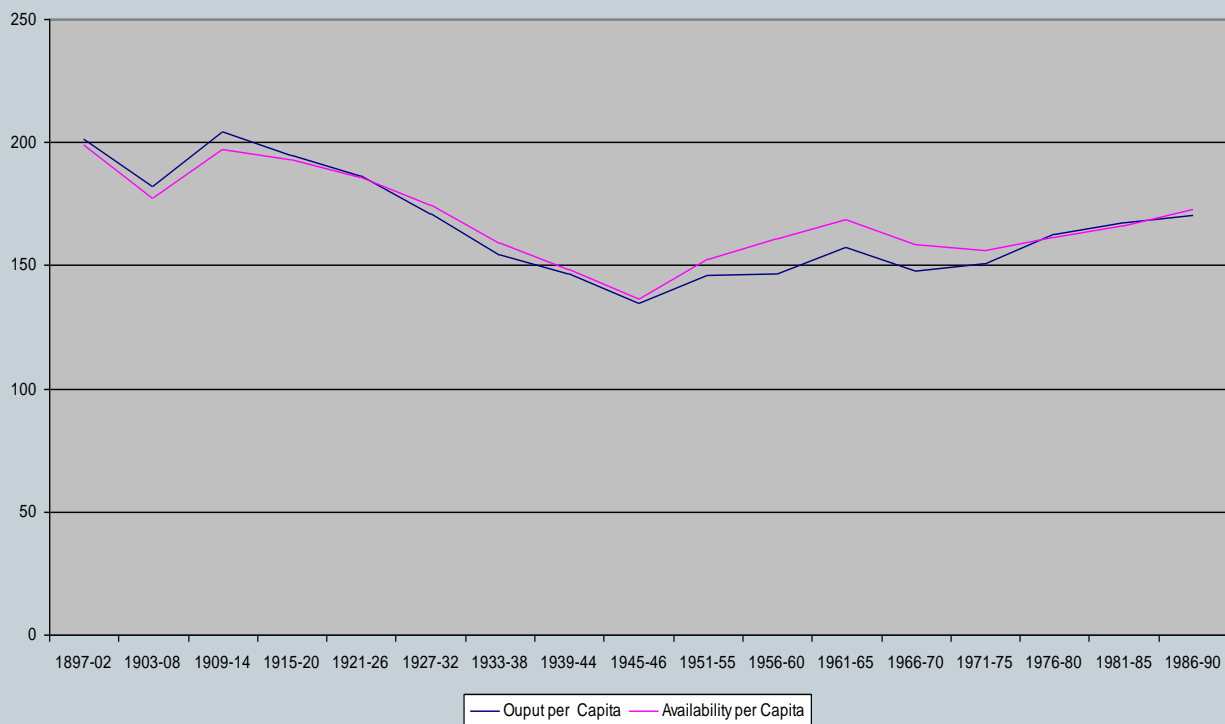


Chart 4b Per Capita Cereal Output per Annum in Kg., World 1963 to 2005 (Five year average centred on specified year)

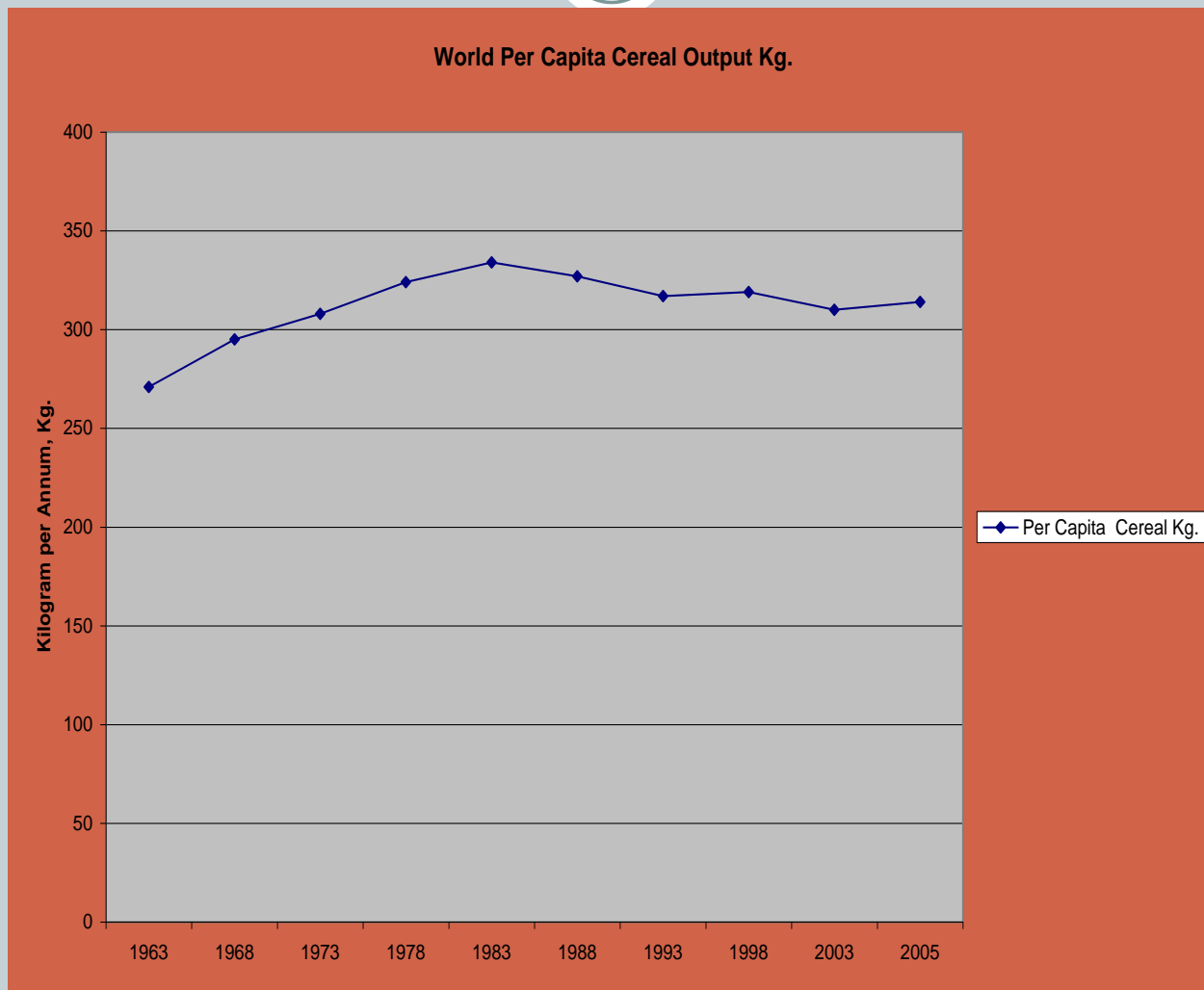


Table 1 Household Ownership Holdings and Area, 1992 and 2003 compared All-India (NSS Report 491 p.12)

	1992			2003			
	HH %	Area %	Area %	HH %	Area %	Area %	
Lowest	65	12.5	11.5	Lowest	65	12.5	11.5
Middle	25	32.5	31	Middle	25	32.5	31
Top	10	55	57.5	Near-top	5	17	11.5
	100	100	100	Top	5	38	46
					100	100	100

Chart 5a Lorenz curve of Owned Land with Rural Households, All-India, 2003

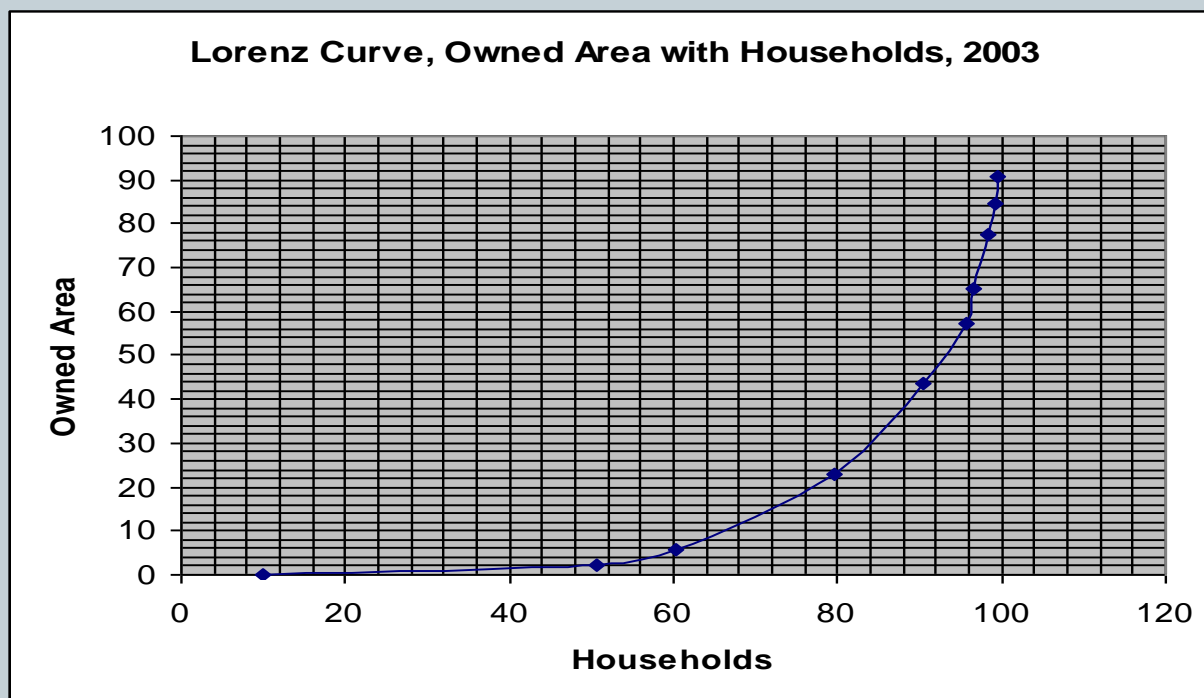


Table 2 Emigration from Europe 1821 to 1915 (million)



EMIGRATION FROM EUROPE						
	1821-50		1851-80		1881-1915	
	Number	%	Number	%	Number	%
EUROPE	3.4	100	8.1	100	32.1	100
of which						
BRITAIN	2.6	76.5	4.6	56.8	8.9	27.7
GERMANY	0.6	17.6	2.1	25.9	2.2	6.9
ITALY	neg.	0	0.2	2.5	7.8	24.3
SPAIN &						
PORTUGAL	neg.	0	0.3	3.7	4.3	13.4
AUSTRIA-						
HUNGARY	neg.	0	0.2	2.5	4.2	13.1
Annual						
averages	113,000		270,000		917,000	

Table 3 Arable area, Total Output Of All Crops and Output per Ha. In India, China and USA 2007



FAOSTAT DATABASE				
	ARABLE	OUTPUT	OUTPUT	INDEX,
	AREA		PER	USA=100
	000 Ha.	000 Tonne	Ha., Tonne	
INDIA	158114	858137	5.43	137
CHINA	109365	1308745	11.97	302
USA	170428	675872	3.97	100
Source: www.faostat.fao.org				
Note: Output includes cereals and pulses, starchy roots, sugarcrops, sugars and sweeteners, Treenuts, Oilcrops, Vegetablke oils, vegetables and fruiys, Stimulants and spices				

Chart 6a Coconut Price Trend in India compared to Indonesia and Philippines, 1991 to 2003

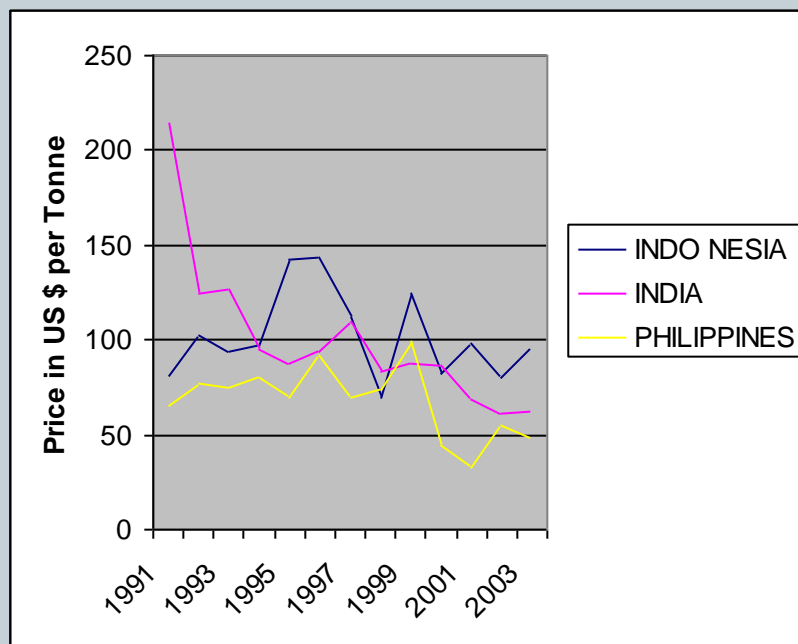


Chart 6b Index of Coconut Price 1991 to 2003, base 1991=100

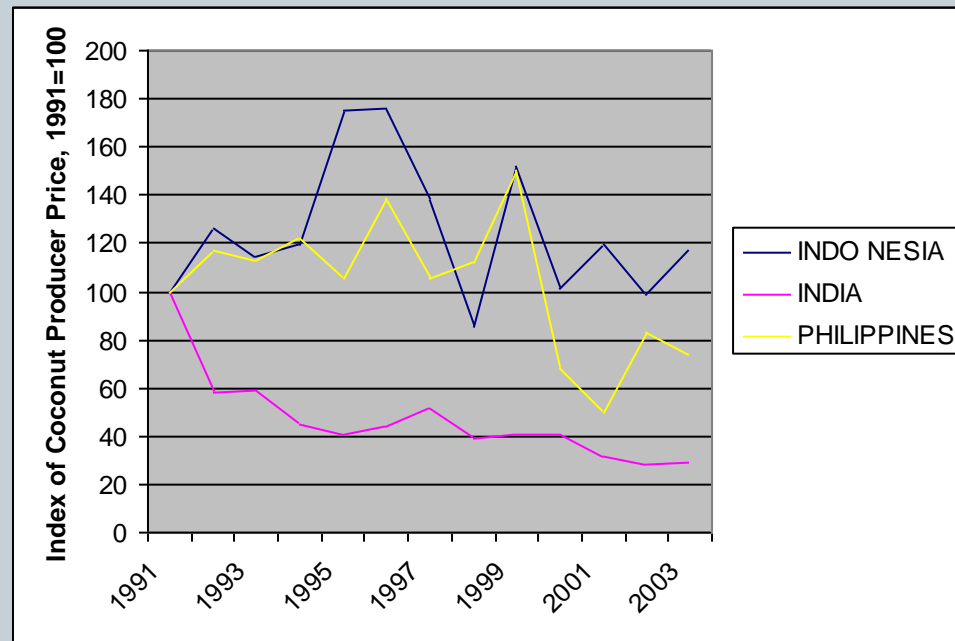


Chart 6c Price Trend of Pepper 1999-00 to 2004-05

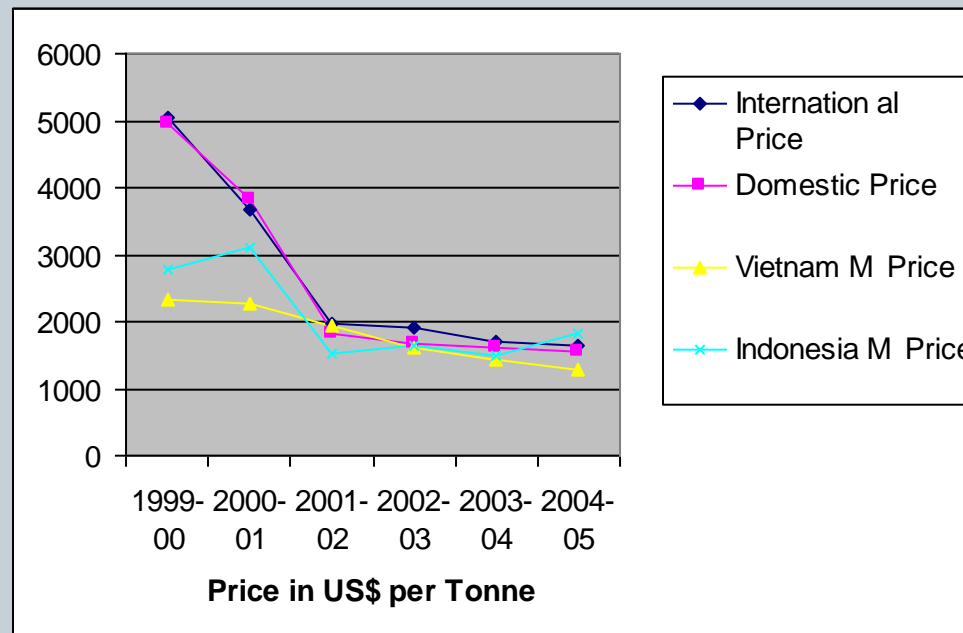


Chart 6d Index of Pepper Price 1999-00 to 2004-05 with base 1999-00 = 100

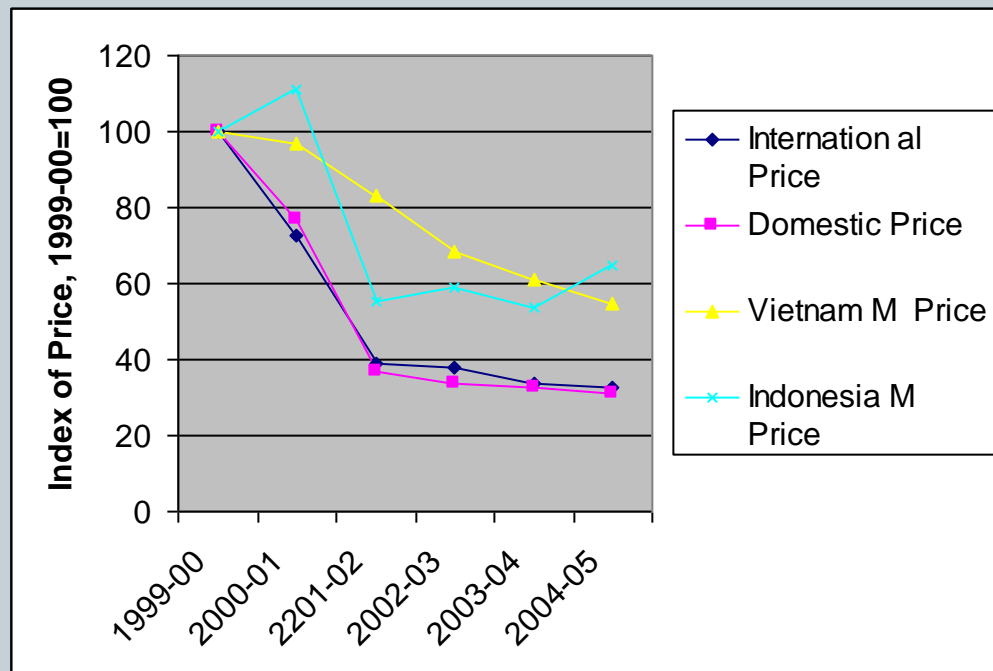


Chart 6e Recent Price Changes, March to December 2008 (Rs. Per Quintal except Cardamom which is Rs. Per 10 kg)

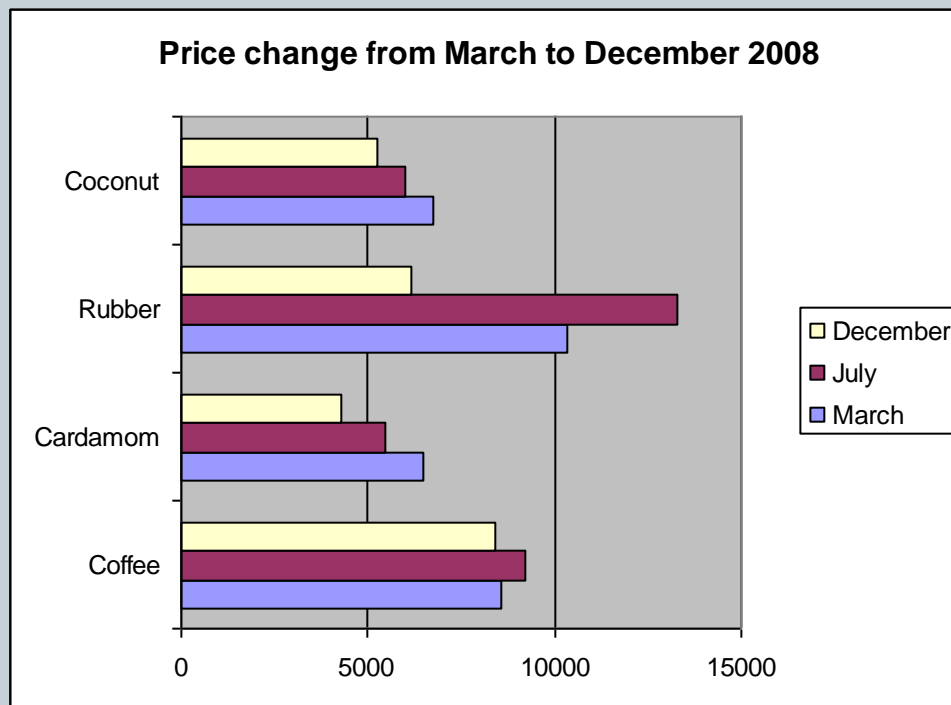


Chart 7 Farmer Suicide Rate compared to General Suicide Rate 2001



Farmer Suicide Rate compared with General Suicide Rate, Census 2001

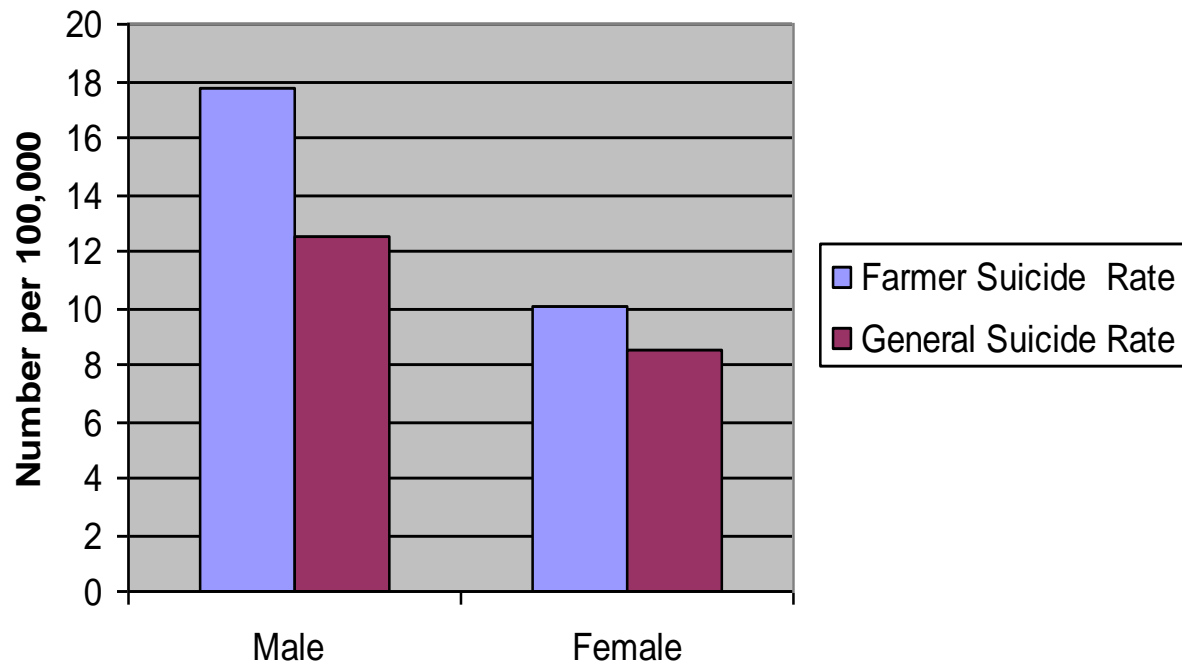


Chart 8 Direct, Indirect and Total Demand for Grain with Rising Income

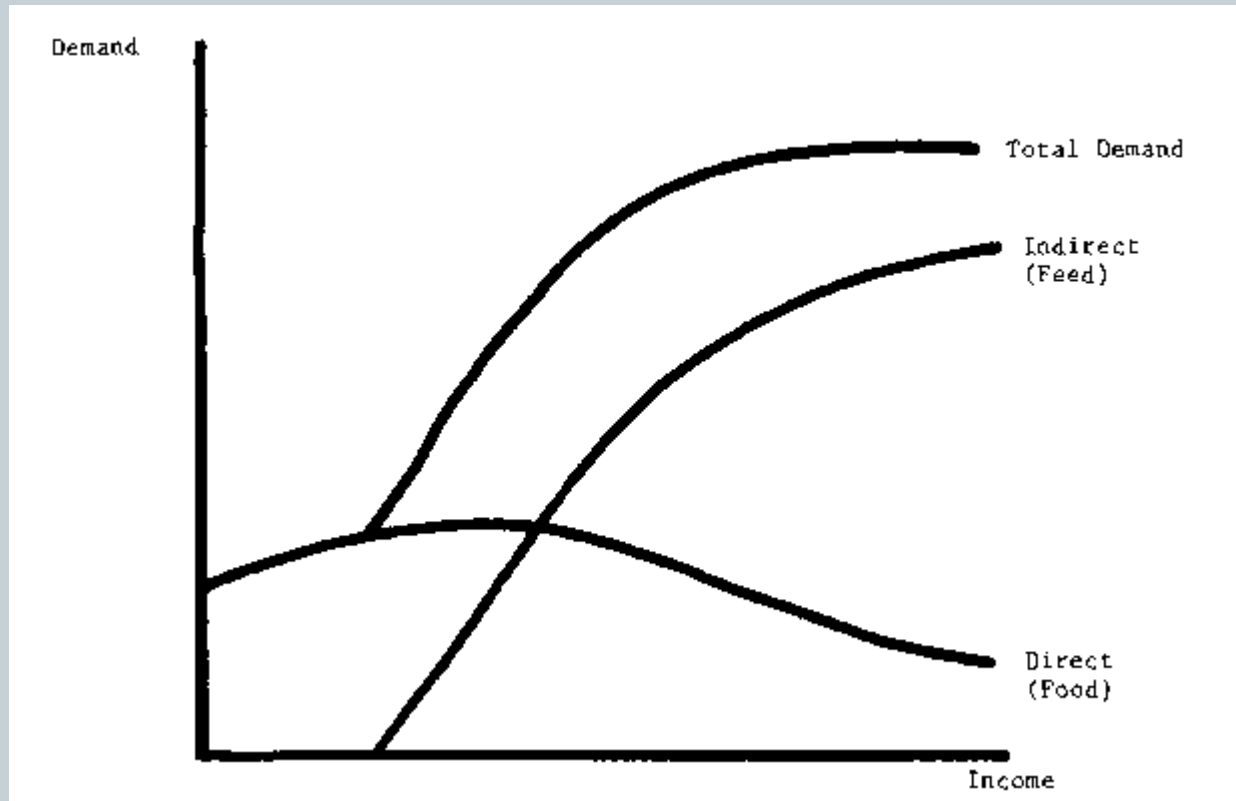
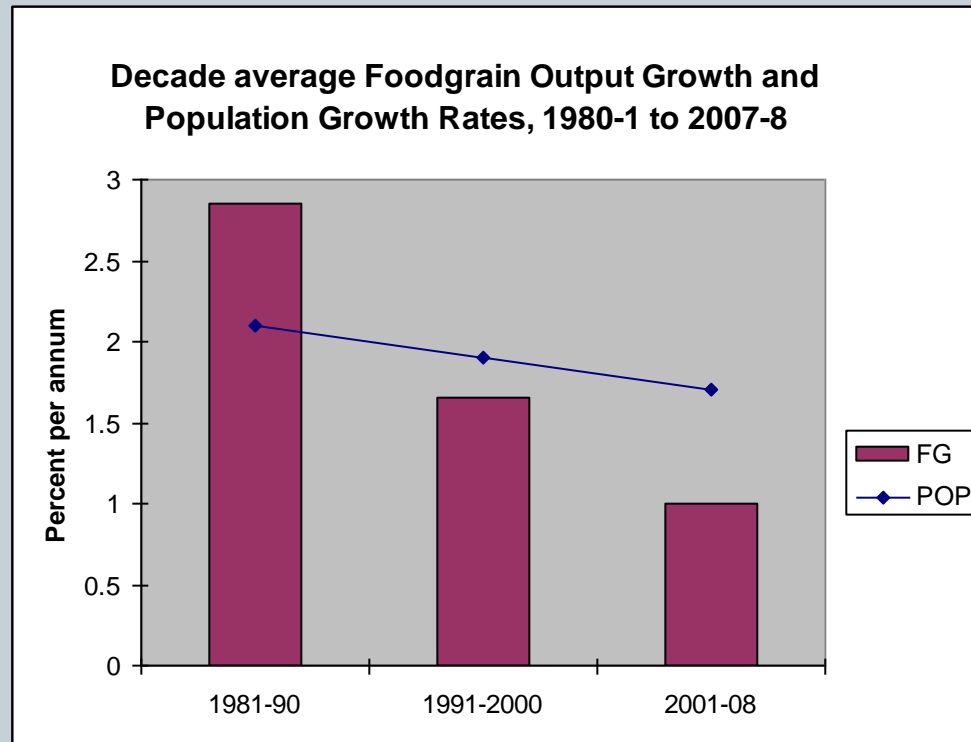


Chart 9a Decadal average Foodgrains Growth rate and Population Growth rate, 1981 to 2008



Note : Output is Net Output = 0.87.5 times Gross Output

Availability = Net Output + Net Imports – Net Addition to Public Stocks. Both variables divided by total population for per capita values. Chart updated to 2007-08 from Patnaik, 2007b

Chart 9c Output per Capita per annum of Cereals and Starchy Roots in China, 1988 to 2002, in Kilograms

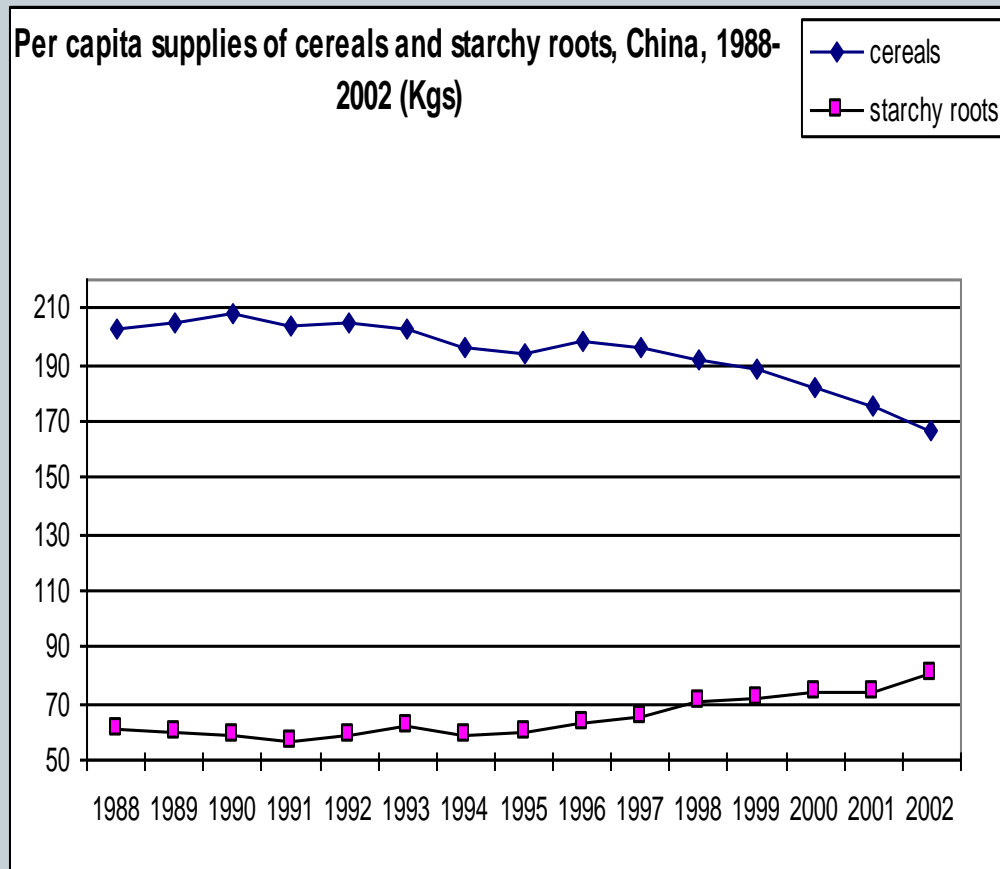
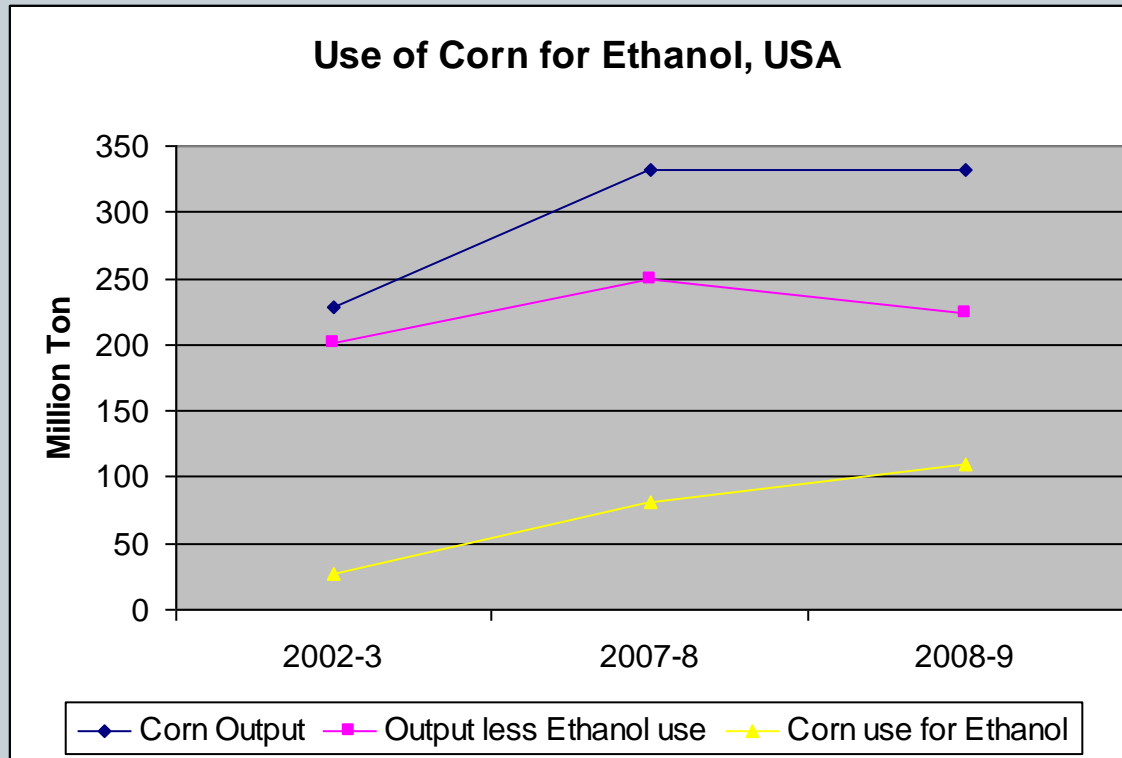


Chart 9d Use of Corn for Ethanol, USA 2002-3 to 2008-9



**Table 3 The Rural poor as Percent of Rural Population,
1993-4 to 2009-10**

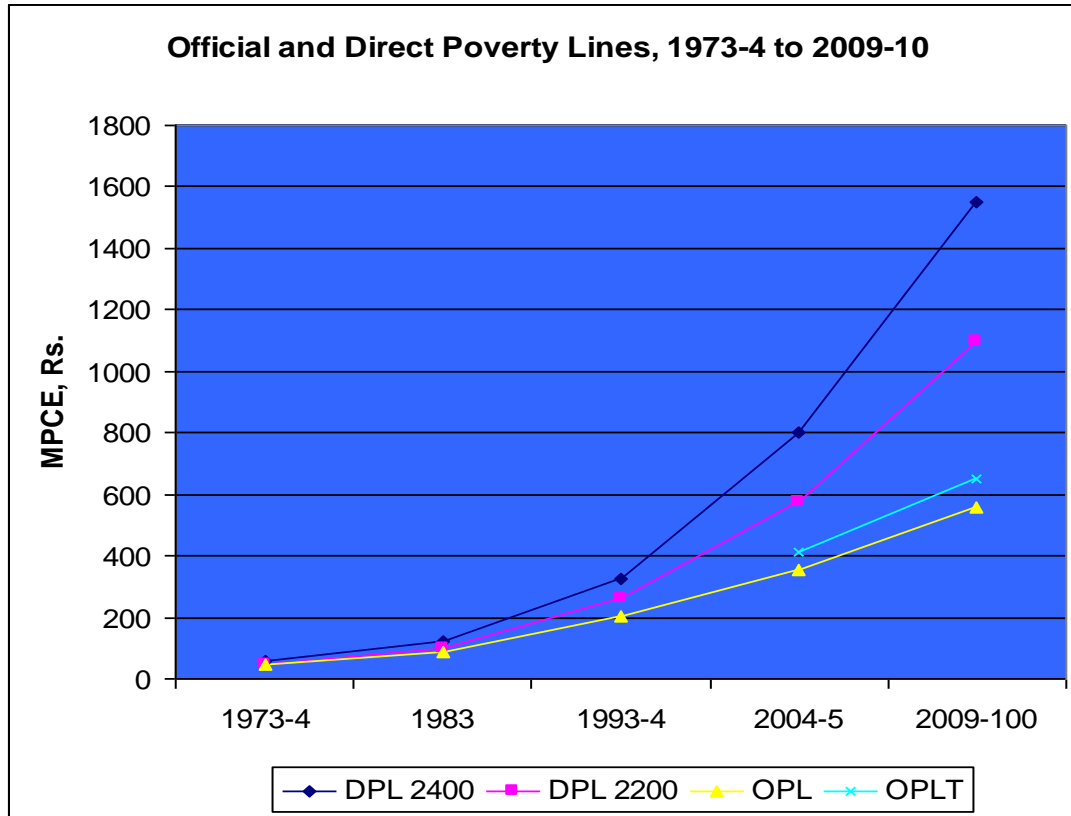
NSS Round	50th 1993-4	61st 2004-5	66th 2009-10
1..Direct Poverty Line			
DPL, at 2200 calories	325	575	1100
2.Official Poverty Line			
OPL, Rs.	206	356 (414)	(673)
3.Direct Poverty Ratio			
DPR, %	58.5	69.5	75.5
4.Official Poverty Ratio			
OPR, %	37.3	28.3 (41.5)	33.8
5.Calorie Intake @ OPL	1980	1820(1950)	1880
6. Deficit of Calorie Intake from norm	- 420	- 580 (-450)	- 520

Official Poverty Lines are large underestimates



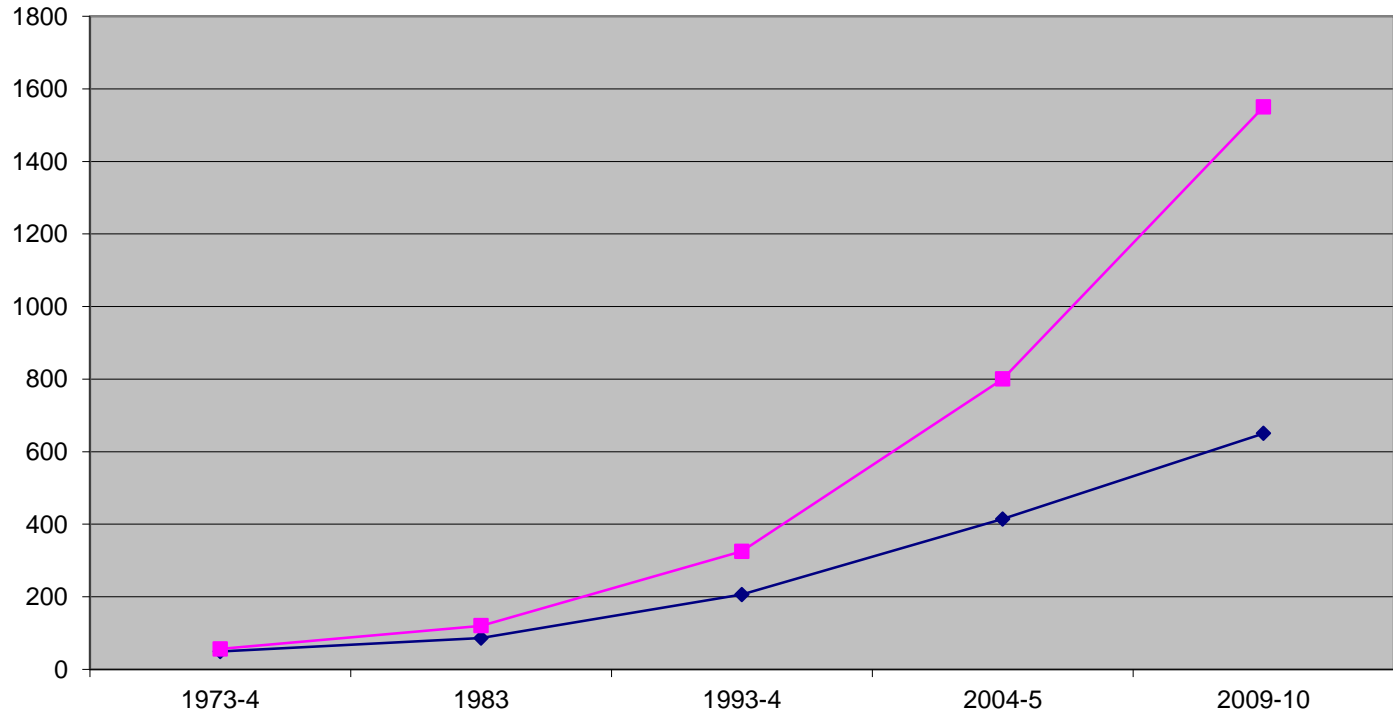
- **2004-5 Official Poverty Lines (for meeting a nutrition norm plus all other observed consumption)**
- ***RURAL*** Rs 356 per month, Rs.11.87 per Day (1820 calories)
- Revised: Rs.415 per month, Rs. 13.83 per day (1,930 calories)
- ***URBAN*** Rs. 538.6 per month, Rs. 18 per Day (1,795 calories) Not revised

Chart 10a Official and Directly estimated Poverty Lines, All-India Rural, 1973-4 to 2009-10 .



Source: Table 1 lines 1 and 5. Official poverty lines update the cost of a 1973-4 basket while direct poverty lines apply the official nutrition norm to the current data at each point of time

Official and Direct Nutrition-invariant Poverty lines, 1973-4 to 2009-10



—◆— Official Poverty Line —■— Direct Poverty Line

Chart 10b Official and Directly estimated percent of Persons in Poverty, All-India Rural, 1973-4 to 2009-10

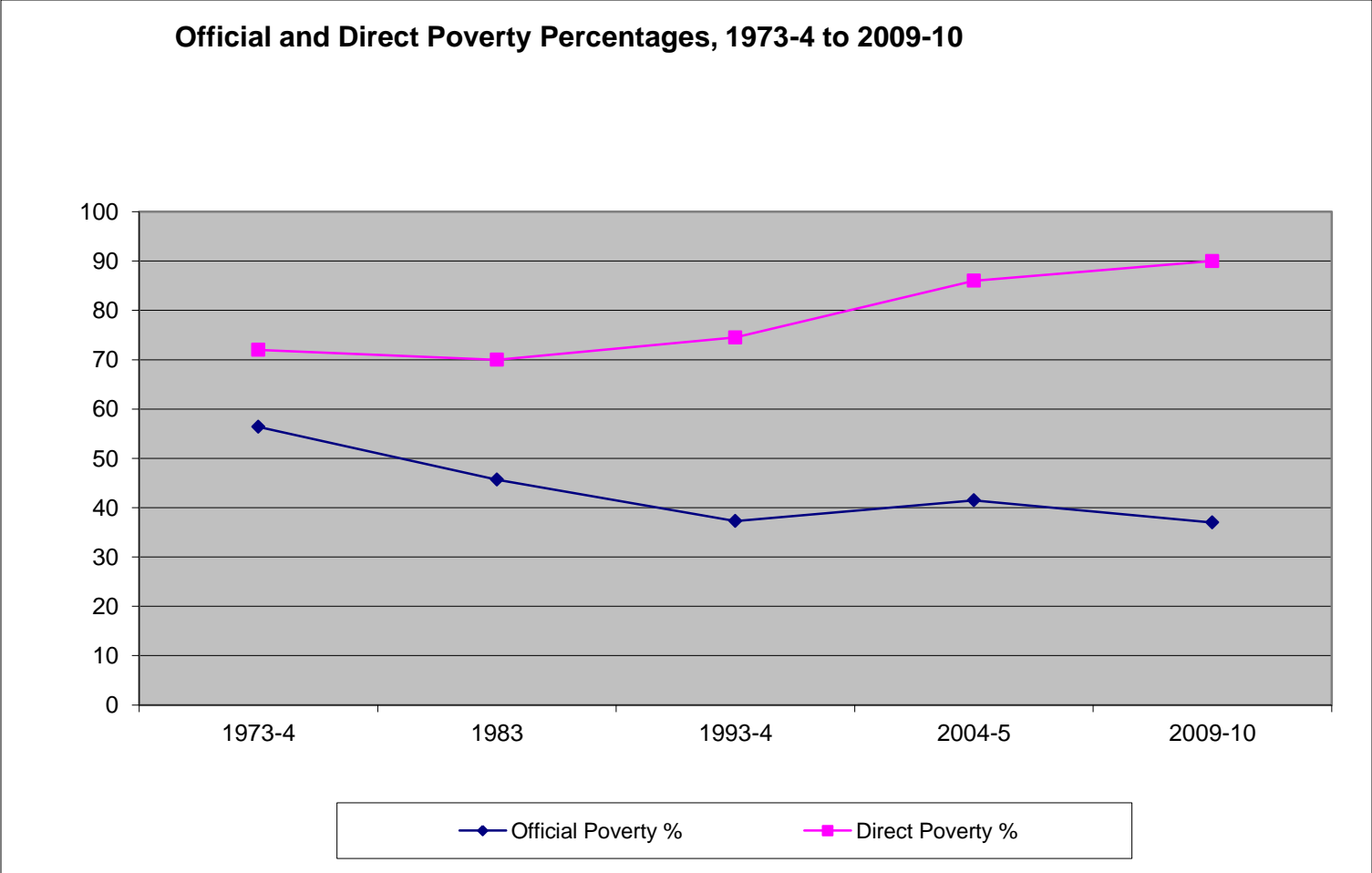
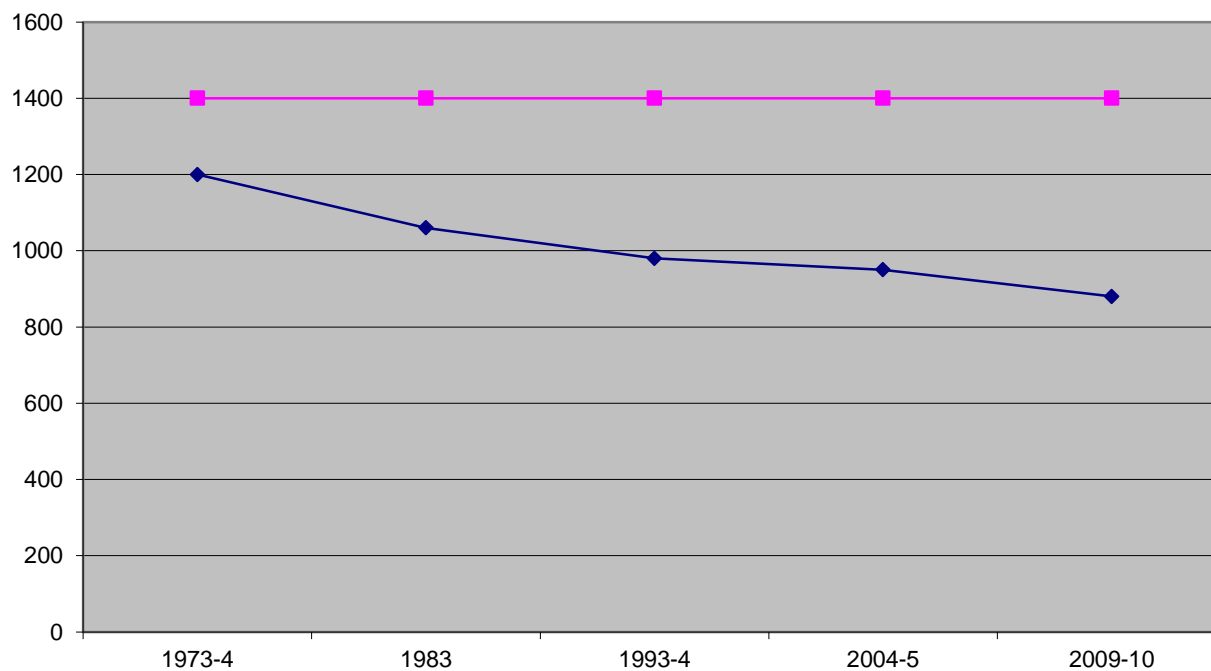


Chart 10c Declining Calorie Intake accessible at Official Poverty Lines, All-India Rural 1973-4 to 2009-10

Declining Calorie Intake at Official Poverty Lines, 1973-4 to 2009-10



So

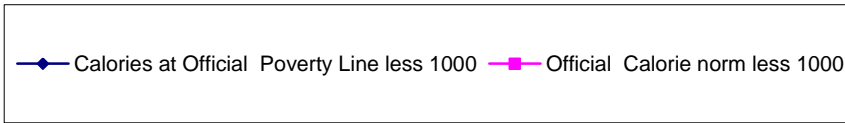


Chart 11 Per Capita Daily Availability of Food grains in Gm. India 1977 to 1991

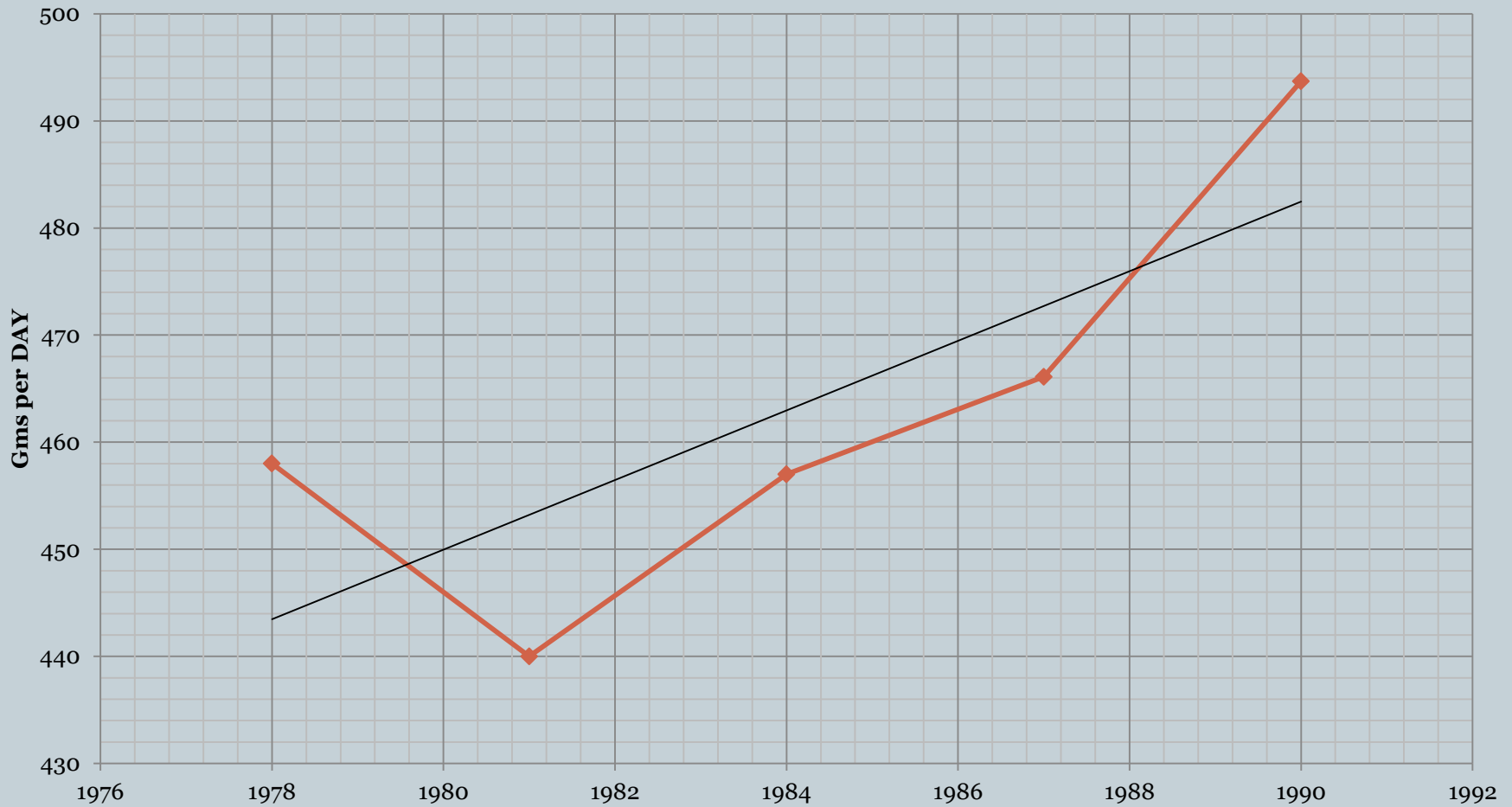
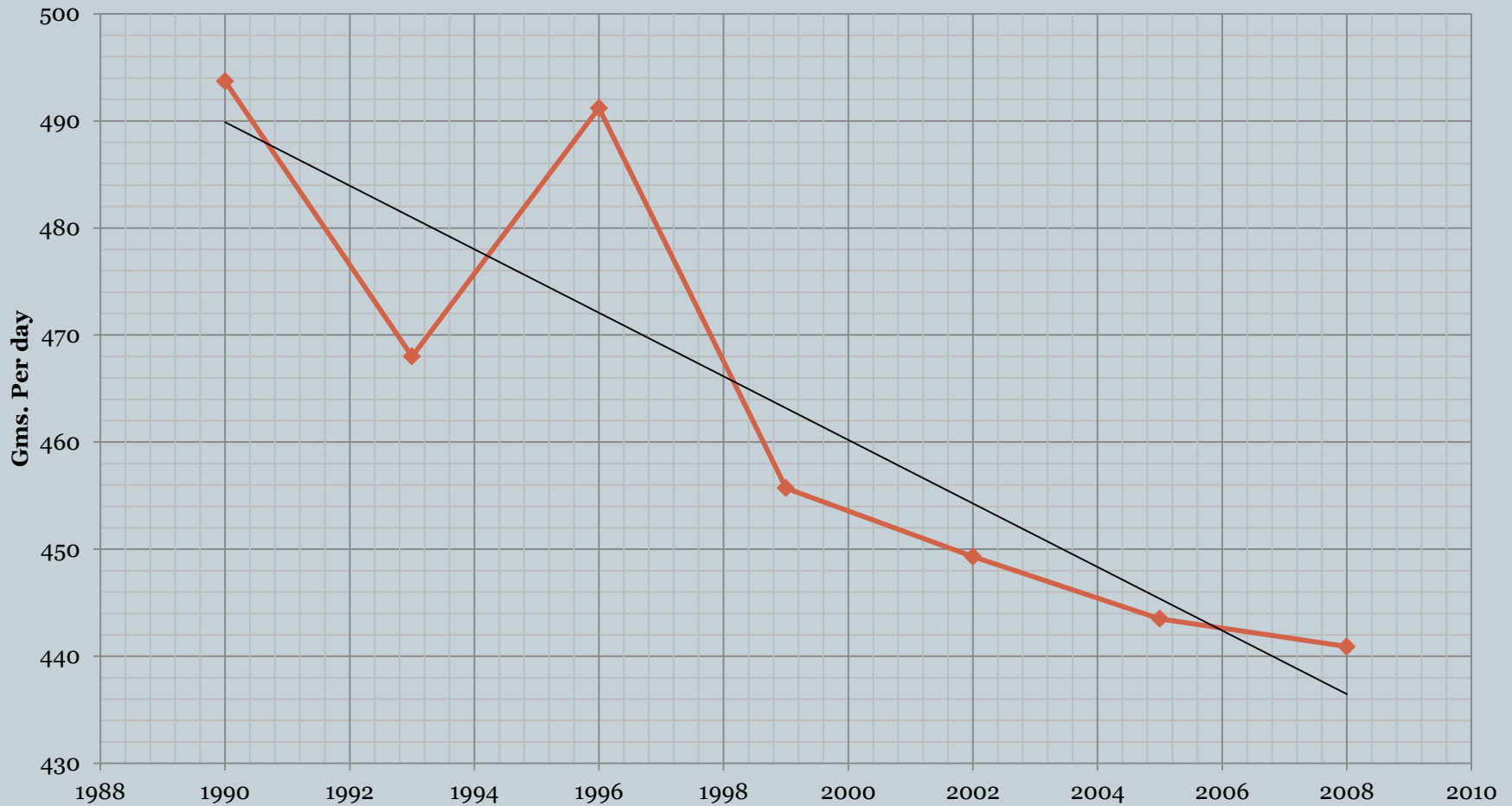


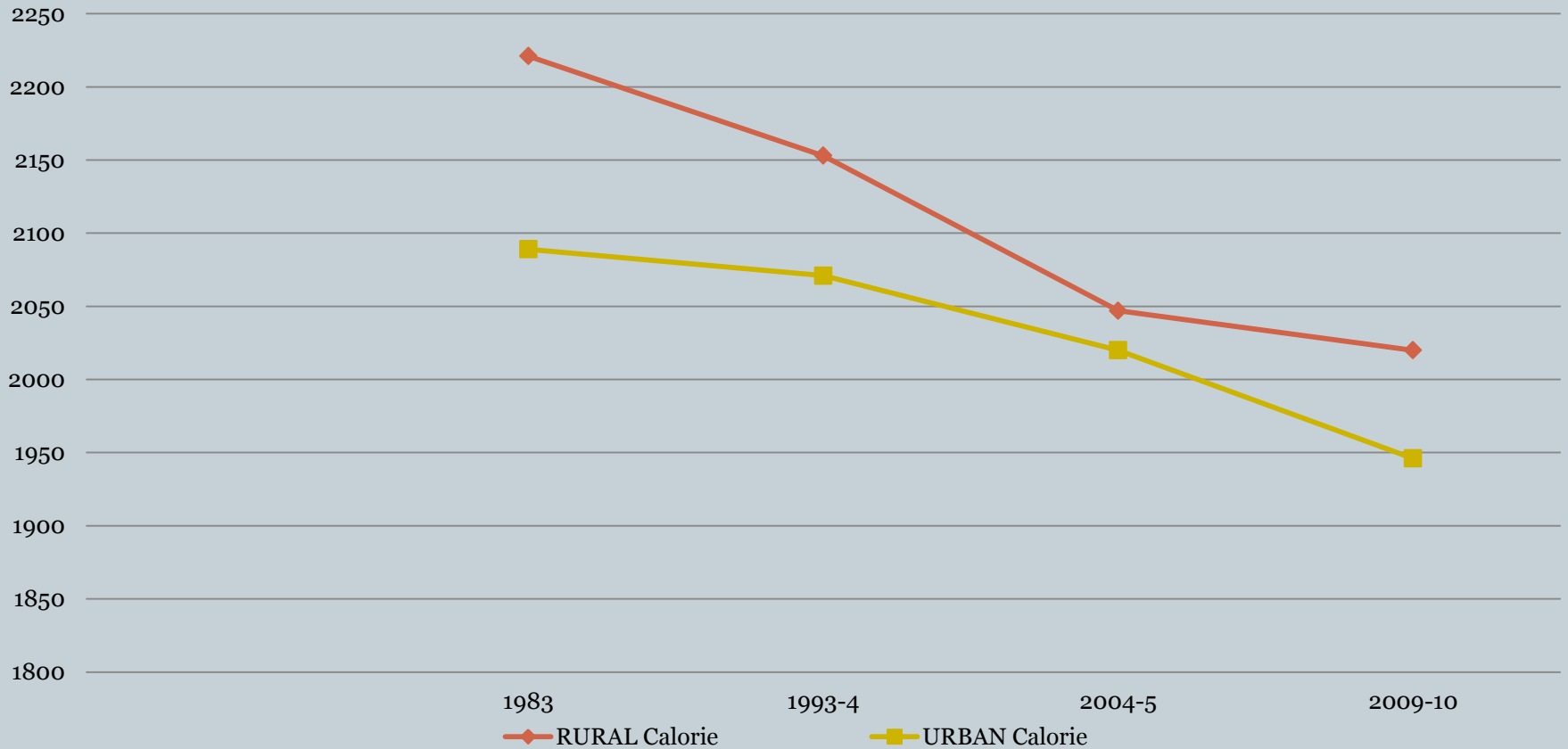
Chart 12 Per Capita Daily Availability of Foodgrains in Gms India 1989 to 2009



Decline in Rural and Urban per Capita Calorie Intake 1983 to 2009-10



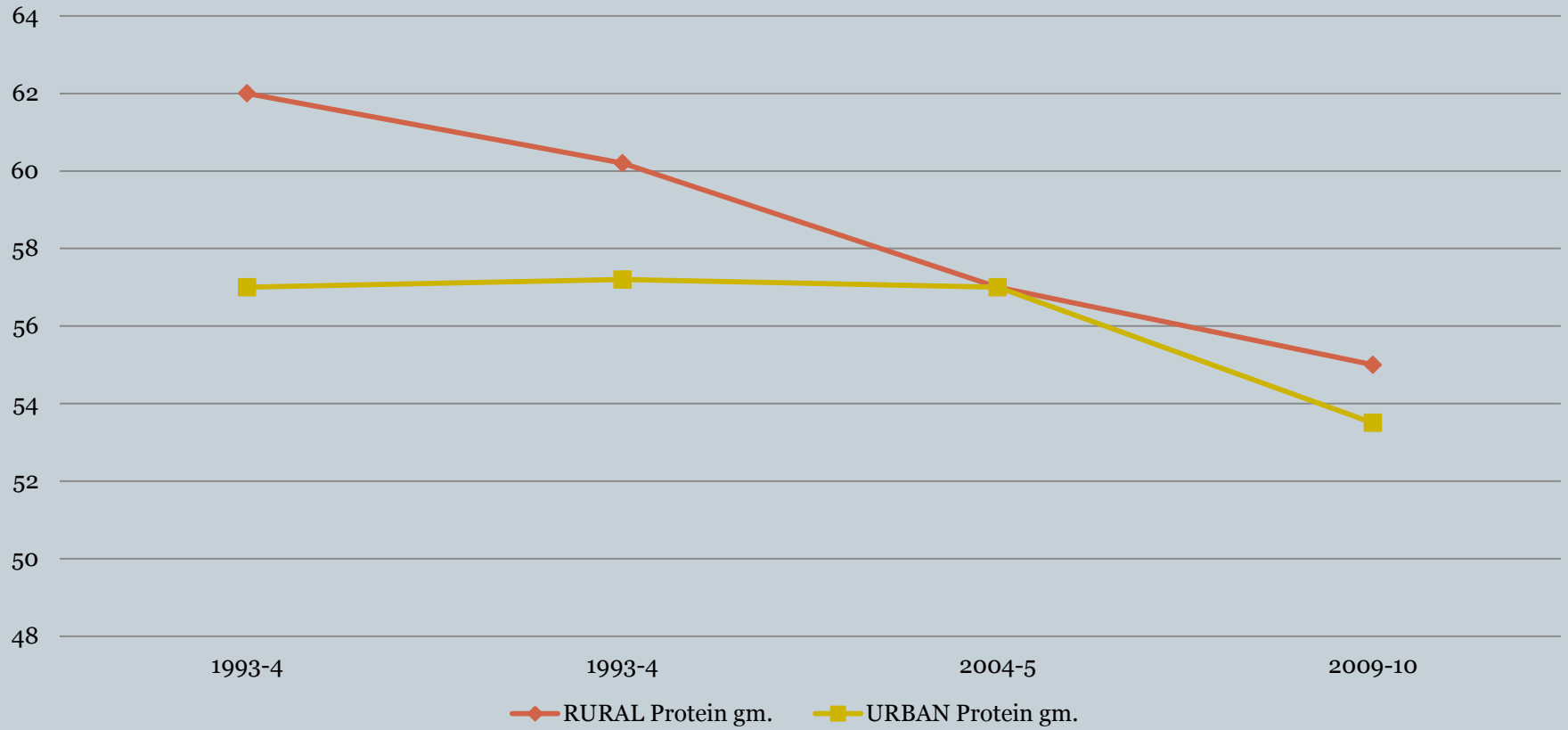
Trend in Rural and Urban Calorie Intake per Capita 1983 to 2009-10




Rural and Urban per capita daily Protein Intake in gm. 1983 to 2009-10



Trend in Rural and Urban per capita daily Protein Intake in gm. 1983 to 2009-10



Direct and Official Poverty Estimates All-India Rural, 2009-10



• 1. Calorie Intake Level	2400	2200	2100	1800
• 2. Required MPCE , Rs. (Direct Poverty Line DPL)	1580	1097	925	610
• 3. Percent of Persons Below DPL	90.5	75.5	62	25
• 4. Official Poverty Line OPL			672.8	
• 5. Percent of 'Poor' Persons				33.8
• 6. Calorie Intake at OPL				1870

Direct and Official Poverty Estimates All-India Urban 2009-10



• 1. Calorie Intake Level	2400	2200	2100	1800
• 2. Required MPCE , Rs .				
• (Direct Poverty Line DPL)	5300	2700	2125	1025
• 3. Percent of Persons				
• Below DPL	95	84	73	32
• 4. Official Poverty Line OPL				863
• 5. Percent of 'Poor'				20.9 .
• 6. Calorie intake at OPL				1720

Change in Household Landownership, 1992 to 2003, Andhra Pradesh



Percent of Total Households	Percent of Total Owned Area		CHANGE
	1992	2003	
60	12	3.5	-8.5
25	24	23.5	-0.5
15	64	73	9
10	28	30	2
5	36	43	7