

# The Question of Land, Livelihoods and Poverty in the Countryside



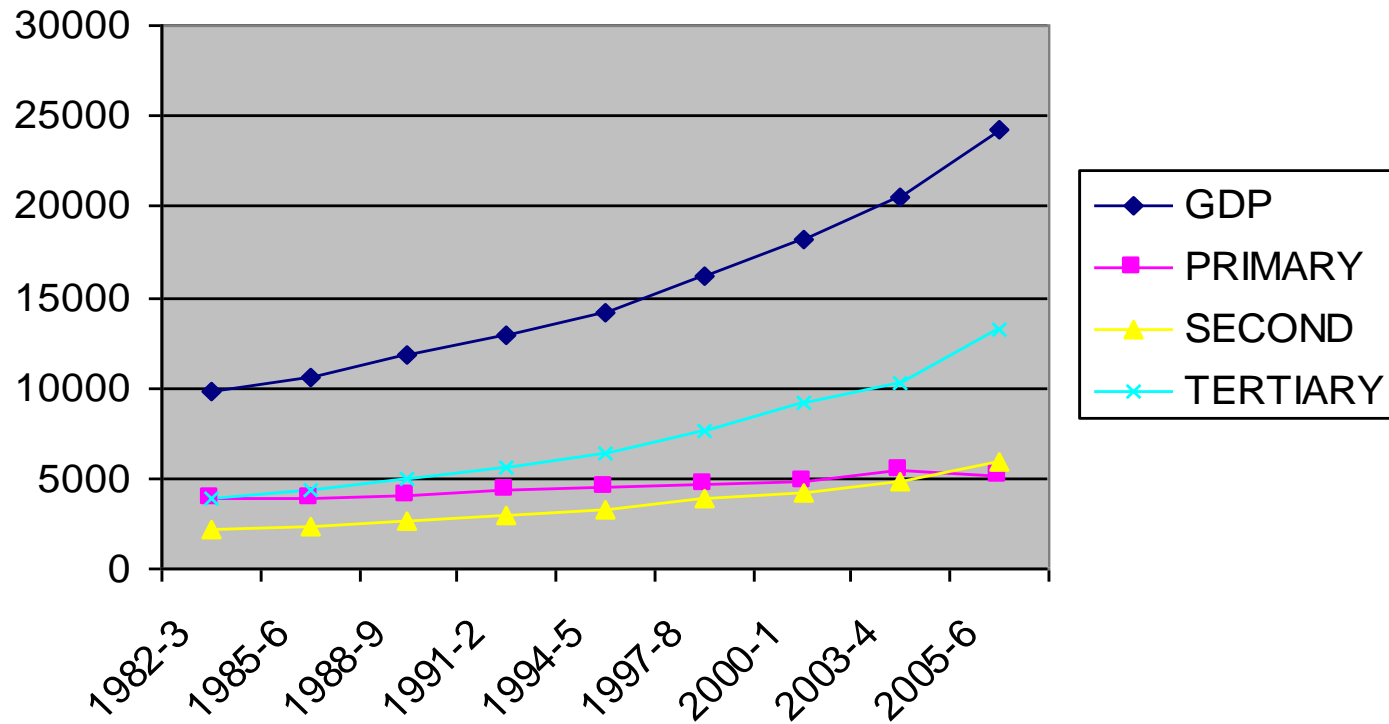
**UTSA PATNAIK**

**Jawaharlal Nehru University**

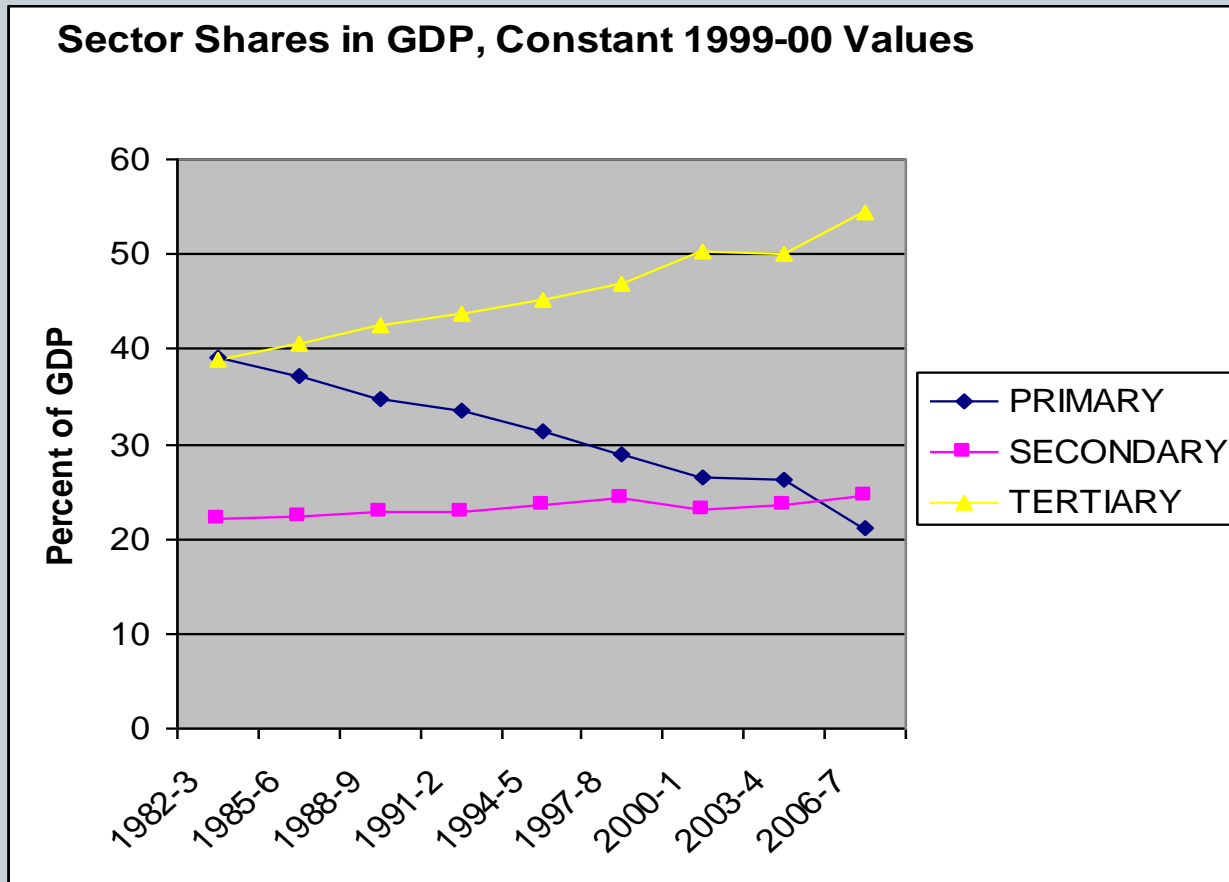
# Chart 1a Sectoral Output and GDP per Head, India 1981-2 to 2005-6



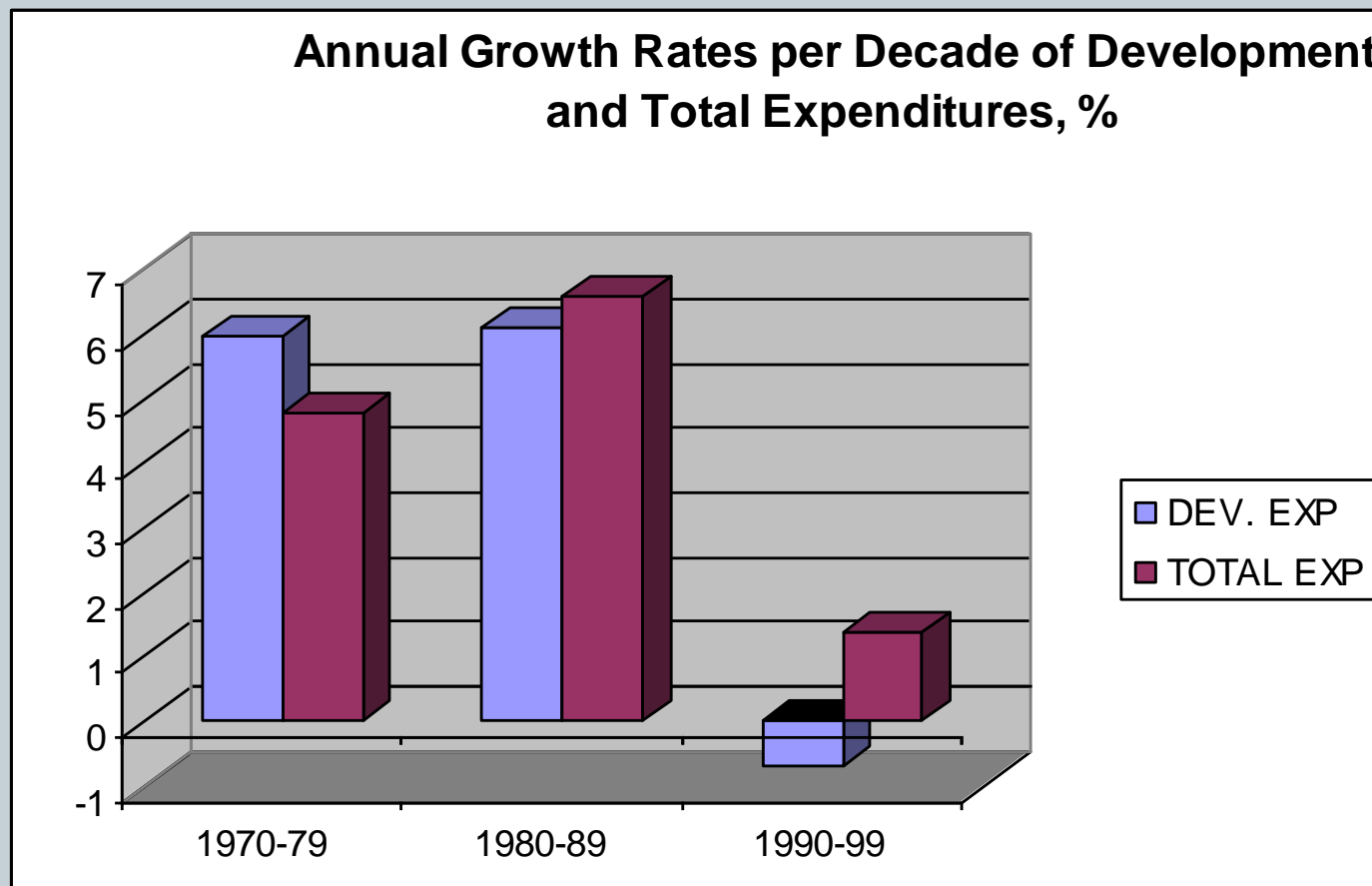
**Sectoral Output per Head and GDP per Head, 1981-2 to 2005-6, Rupees in constant 1999-00 prices**



# Chart 1b Sector shares in GDP in India 1981-2 to 2005-6 (at 1999-00 prices)



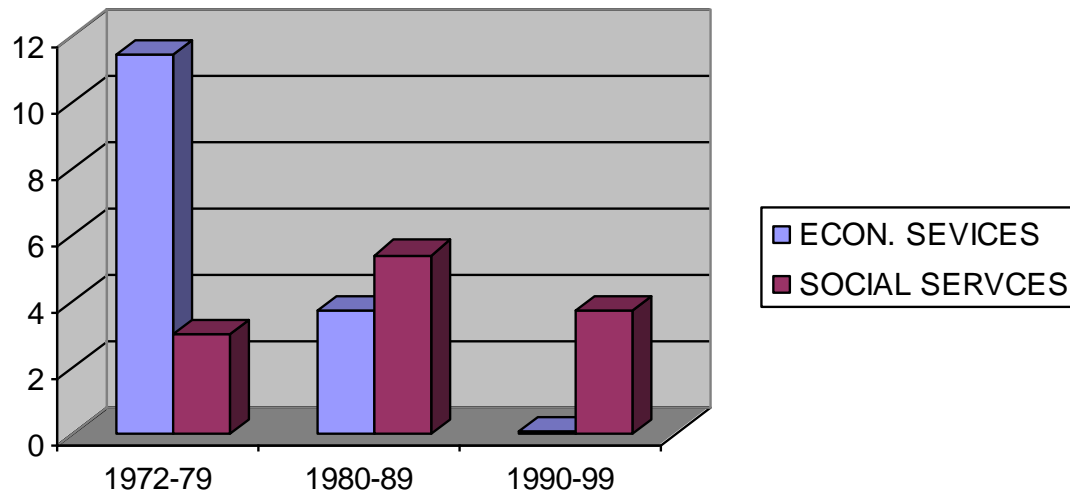
## Chart 2a Annual Growth Rate per decade of Central Govt. Development and Total Expenditure, 1970-79 to 1990-99



# Chart 2b Annual Growth Rate of Spending on Economic and Social Services by States, 1972-79 to 1990-1999



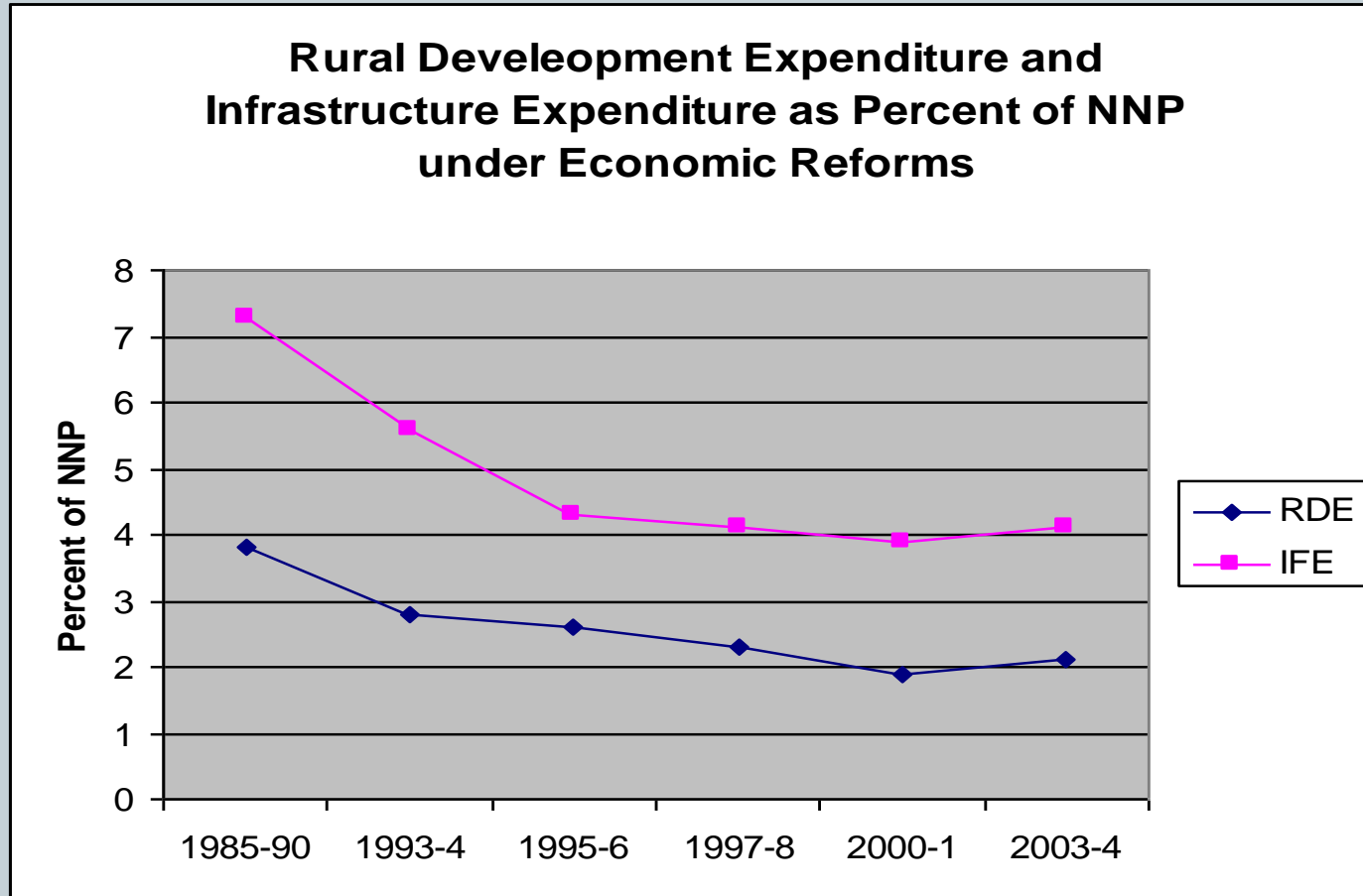
**Annual Growth rates per Decade of Spending on Economic and Social Services by States 1972 to 1999**



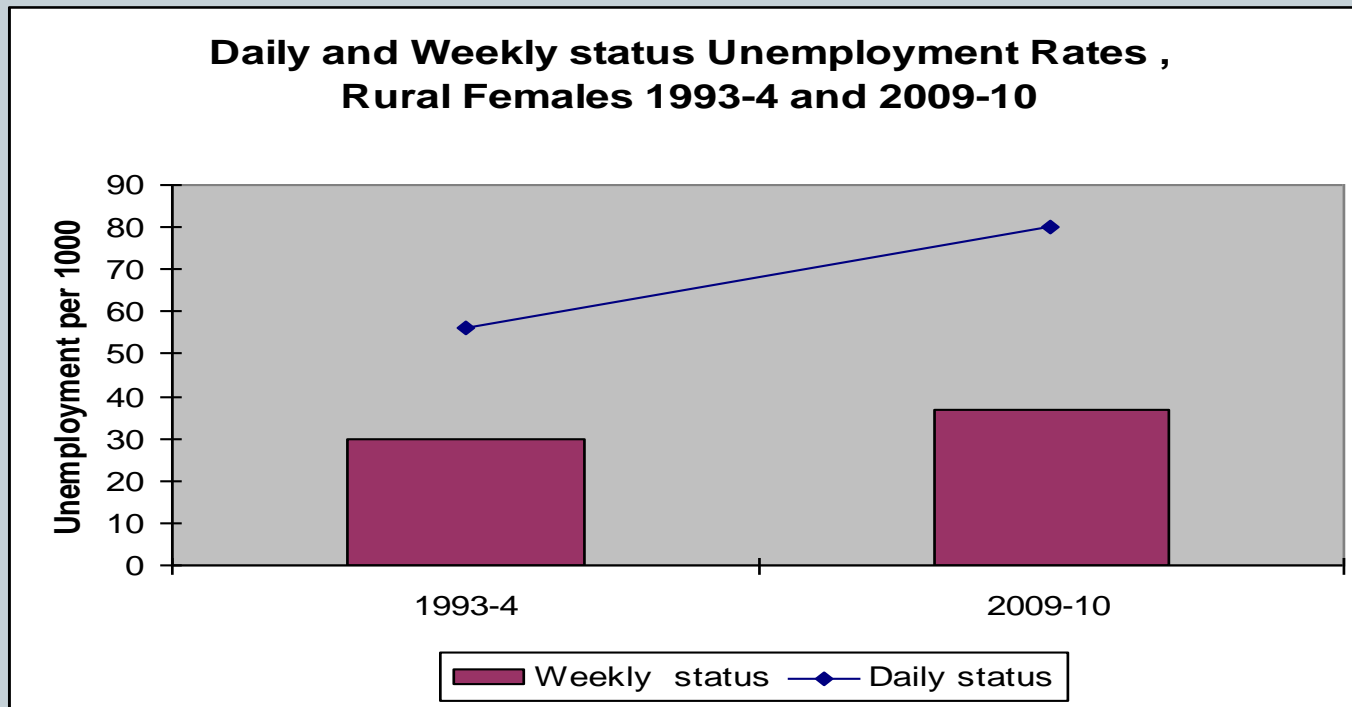
# Chart 2c Decline in Rural Development Spending, 1985-90 to 2003-4



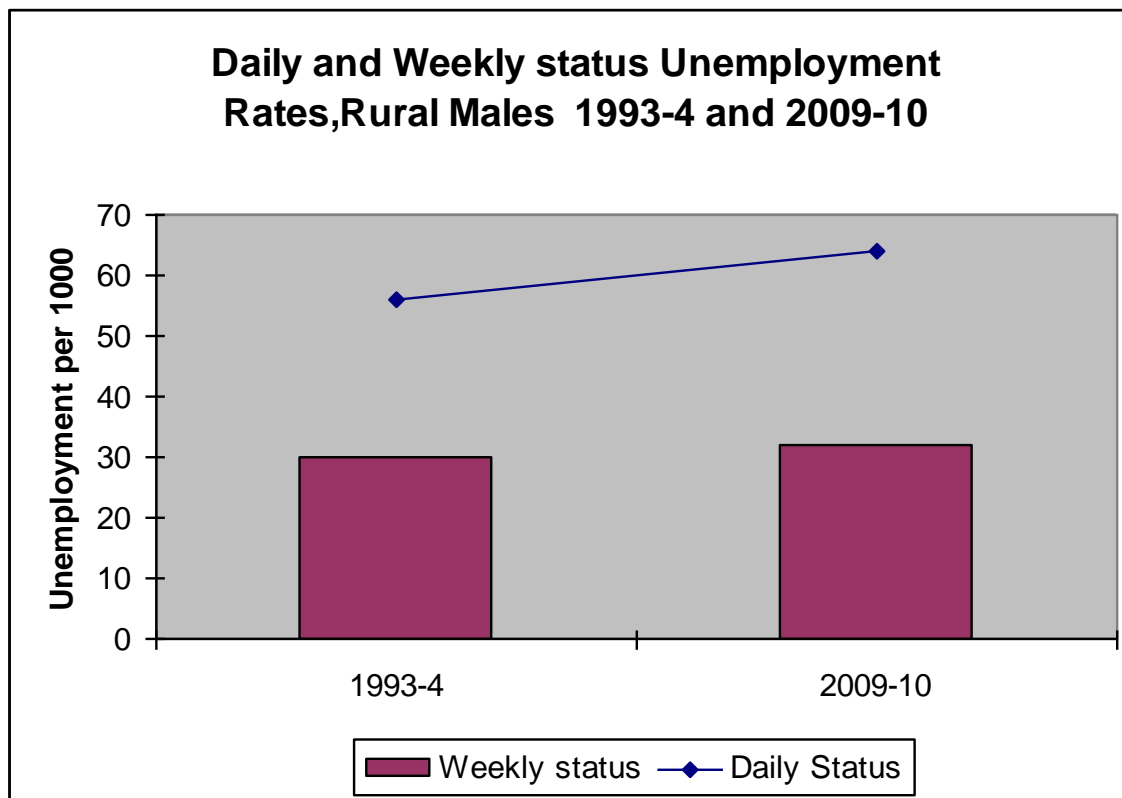
**Rural Development Expenditure and  
Infrastructure Expenditure as Percent of NNP  
under Economic Reforms**



# Chart 3a Unemployment Rates 1993-4 and 2009-10, All-India Rural, Female Workers



# Chart 3b. Unemployment Rates during 1993-4 and 2009--10, All-India Rural, Male Workers

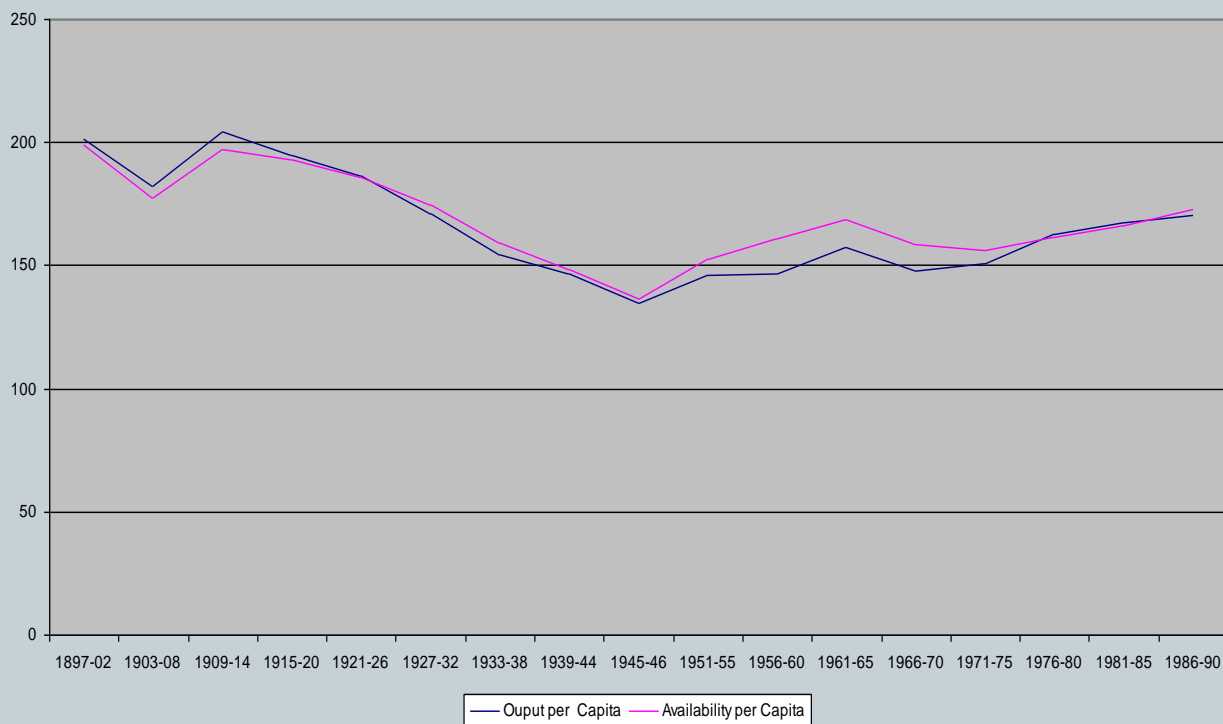




# Chart 4a Food grains output and Availability, India 1899-1990



Foodgrains Output and Availability per Capita, 1897 to 1990



# Chart 4b Per Capita Cereal Output per Annum in Kg., World 1963 to 2005 ( Five year average centred on specified year)

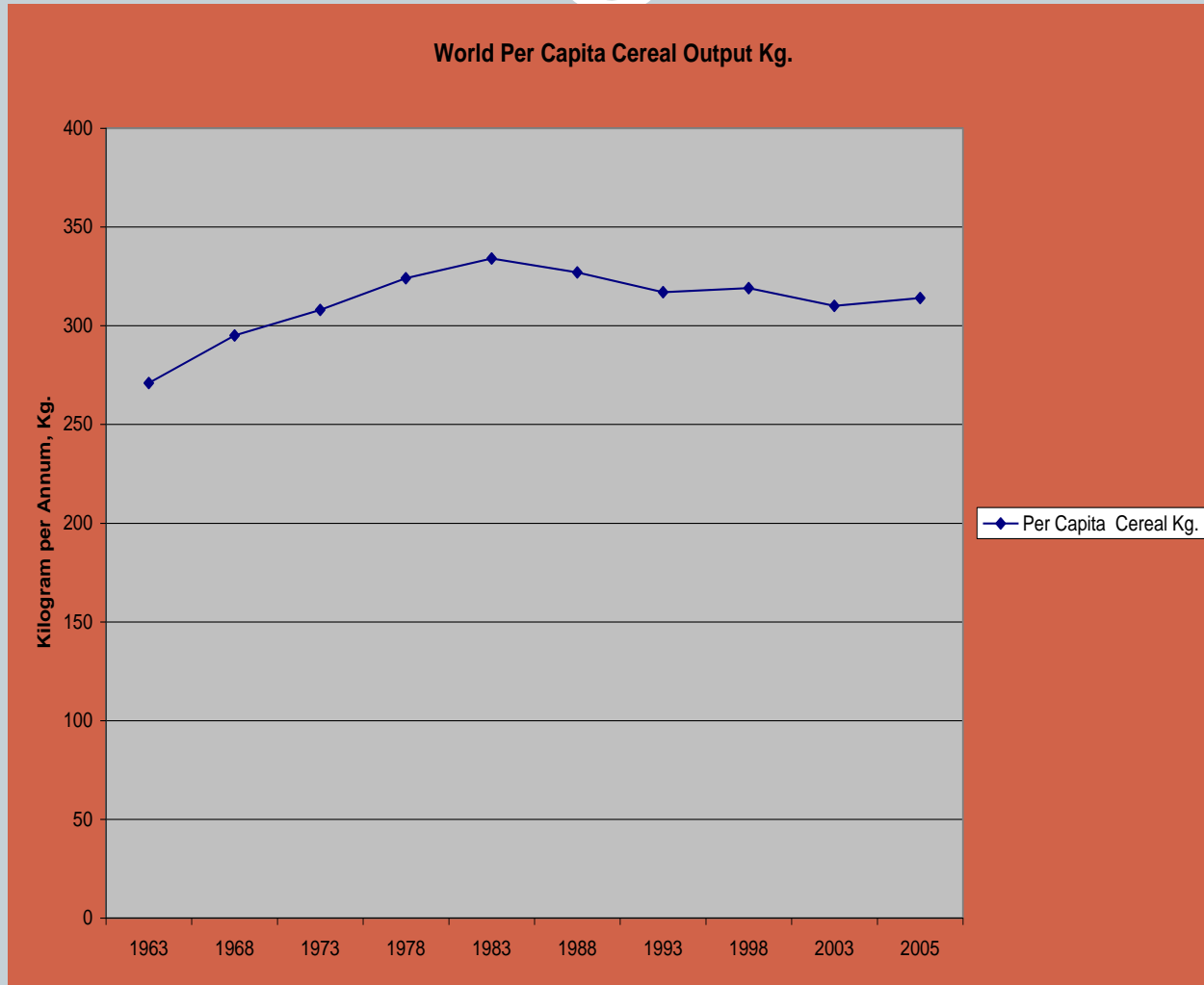
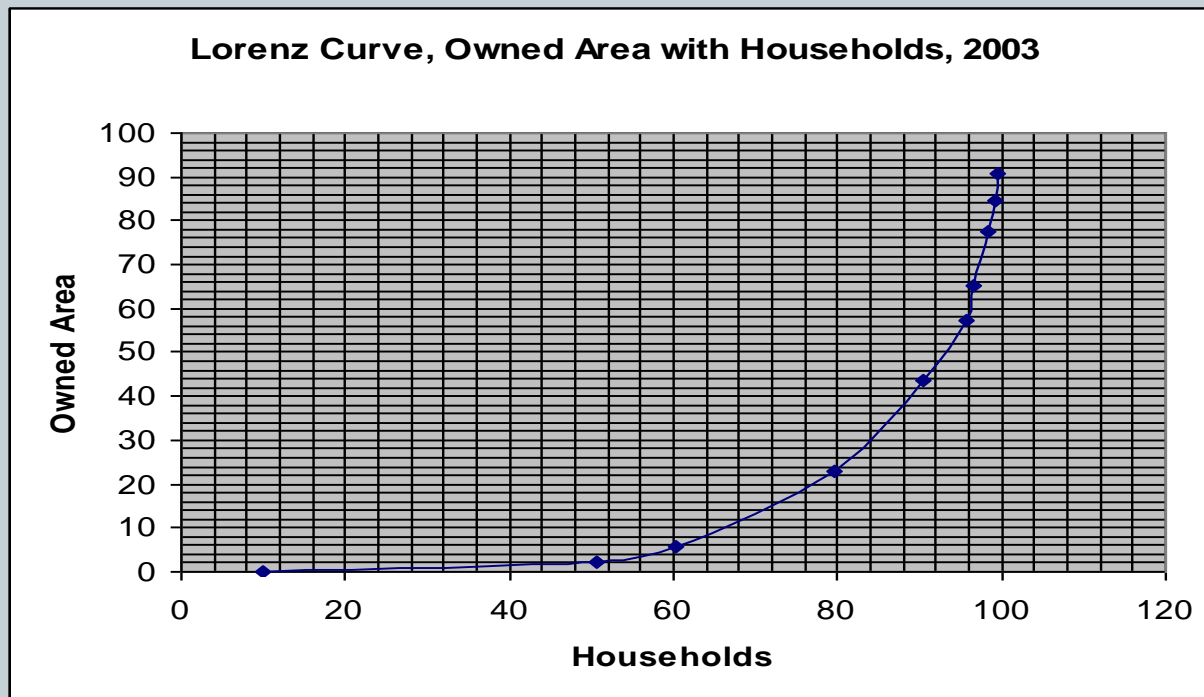


Table 1 Household Ownership Holdings and Area, 1992 and 2003 compared All-India (NSS Report 491 p.12)

	1992			2003			
	HH %	Area %	Area %	HH %	Area %	Area %	
Lowest	65	12.5	11.5	Lowest	65	12.5	11.5
Middle	25	32.5	31	Middle	25	32.5	31
Top	10	55	57.5	Near-top	5	17	11.5
	100	100	100	<b>Top</b>	<b>5</b>	<b>38</b>	<b>46</b>
					100	100	100

# Chart 5a Lorenz curve of Owned Land with Rural Households, All-India, 2003



# Table 2 Emigration from Europe 1821 to 1915 (million)



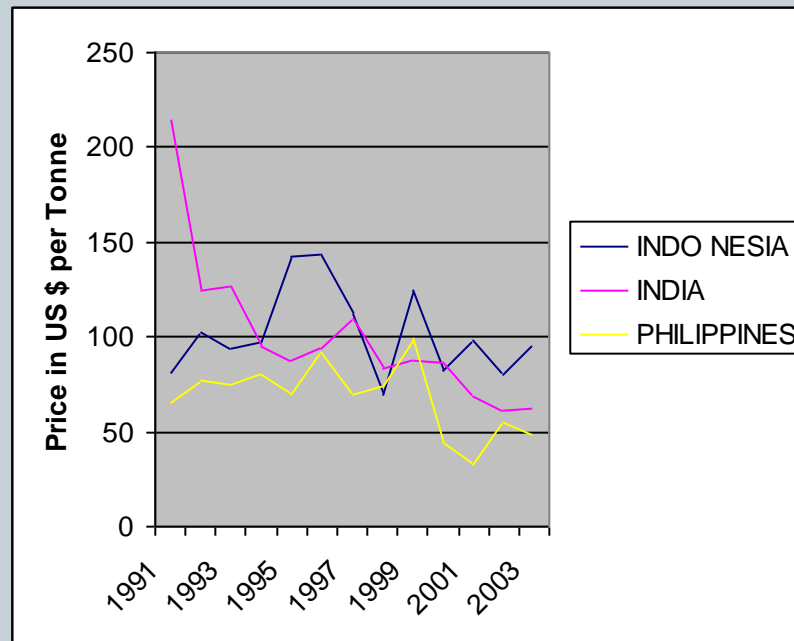
EMIGRATION FROM EUROPE						
	1821-50		1851-80		1881-1915	
	Number	%	Number	%	Number	%
EUROPE	3.4	100	8.1	100	32.1	100
of which						
BRITAIN	2.6	76.5	4.6	56.8	8.9	27.7
GERMANY	0.6	17.6	2.1	25.9	2.2	6.9
ITALY	neg.	0	0.2	2.5	7.8	24.3
SPAIN &						
PORTUGAL	neg.	0	0.3	3.7	4.3	13.4
AUSTRIA-						
HUNGARY	neg.	0	0.2	2.5	4.2	13.1
Annual						
averages	113,000		270,000		917,000	

## Table 3 Arable area, Total Output Of All Crops and Output per Ha. In India, China and USA 2007

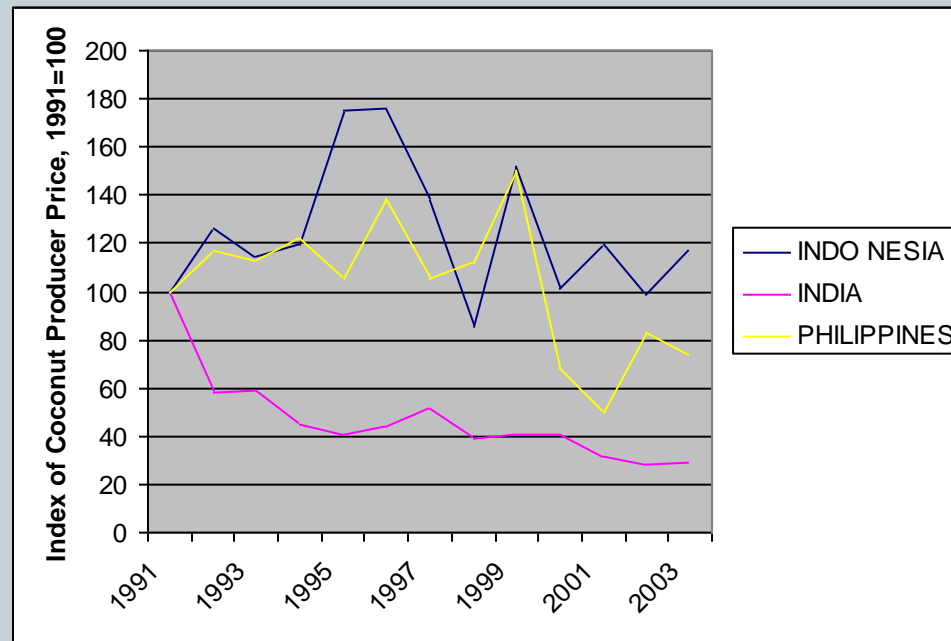


FAOSTAT DATABASE				
	ARABLE AREA	OUTPUT	OUTPUT PER	INDEX,
	000 Ha.	000 Tonne	Ha., Tonne	USA=100
INDIA	158114	858137	5.43	137
CHINA	109365	1308745	11.97	302
USA	170428	675872	3.97	100
Source: <a href="http://www.faostat.fao.org">www.faostat.fao.org</a>				
Note: Output includes cereals and pulses, starchy roots, sugarcrops, sugars and sweeteners, Treenuts, Oilcrops, Vegetablke oils, vegetables and fruiys, Stimulants and spices				

# Chart 6a Coconut Price Trend in India compared to Indonesia and Philippines, 1991 to 2003

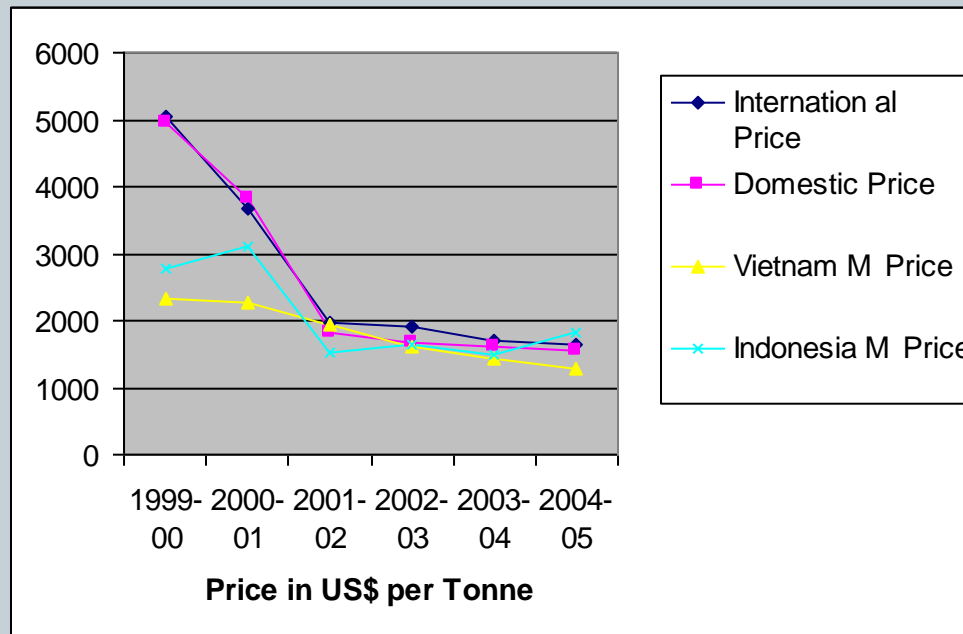


# Chart 6b Index of Coconut Price 1991 to 2003, base 1991=100

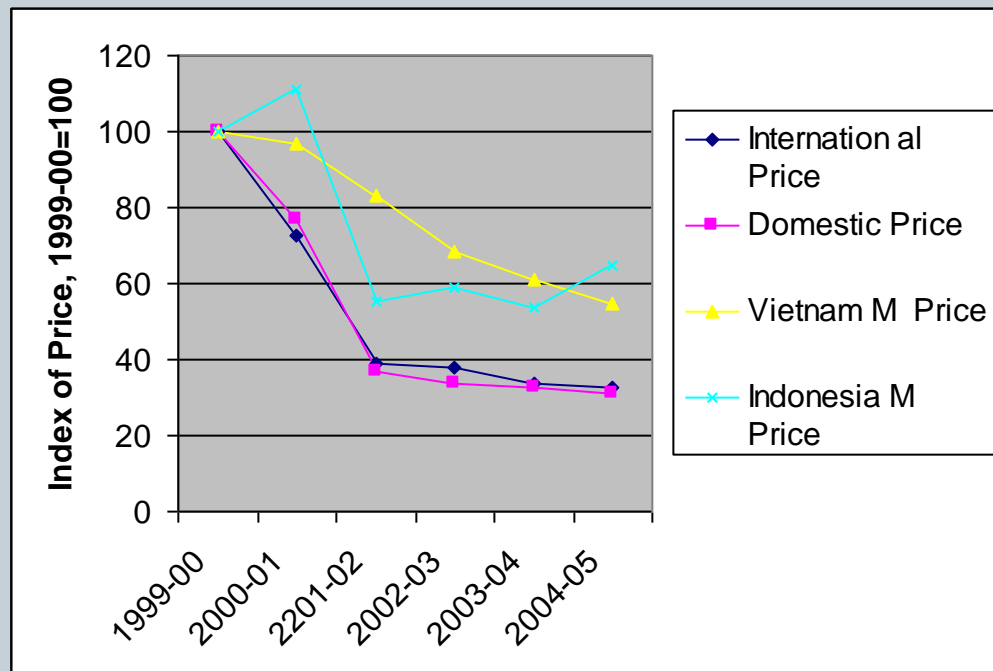




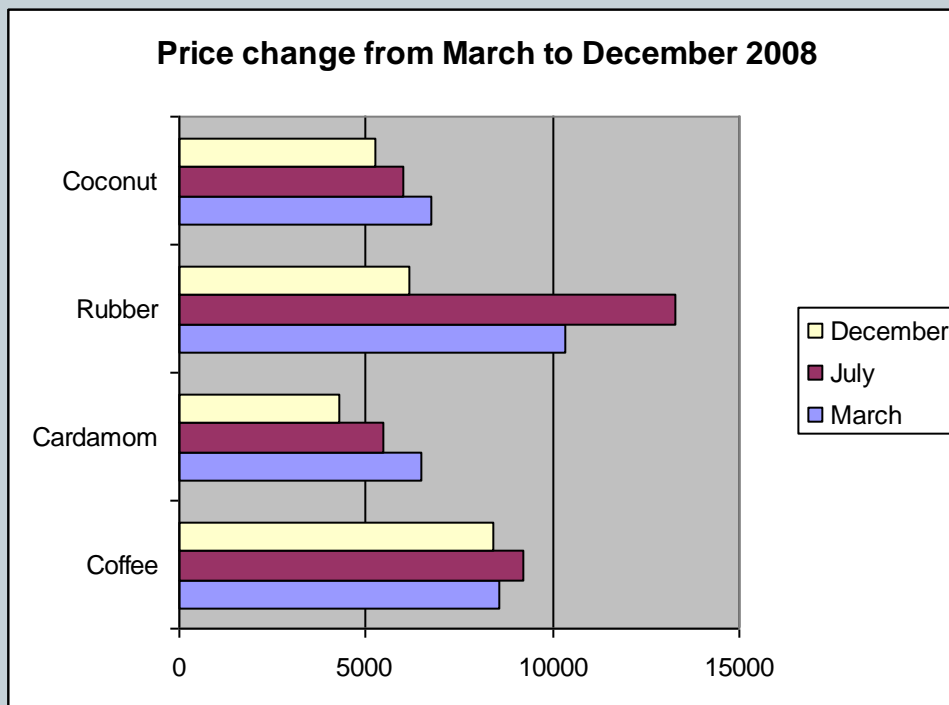
# Chart 6c Price Trend of Pepper 1999-00 to 2004-05



# Chart 6d Index of Pepper Price 1999-00 to 2004-05 with base 1999-00 = 100



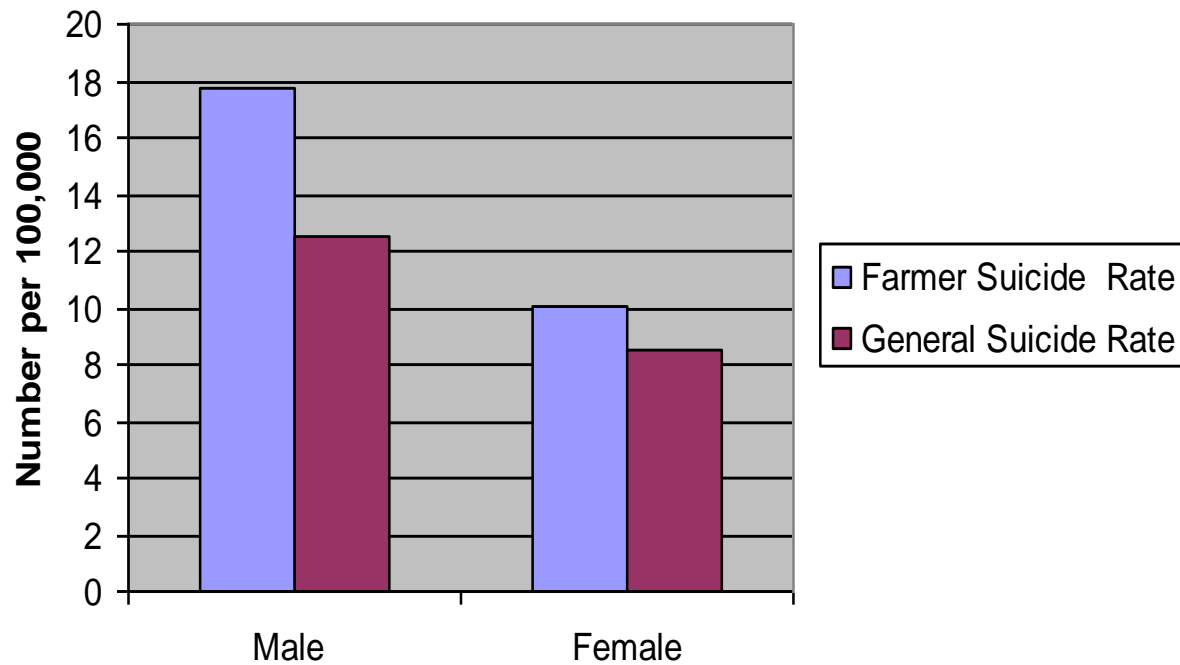
# Chart 6e Recent Price Changes, March to December 2008 (Rs. Per Quintal except Cardamom which is Rs. Per 10 kg)



# Chart 7 Farmer Suicide Rate compared to General Suicide Rate 2001



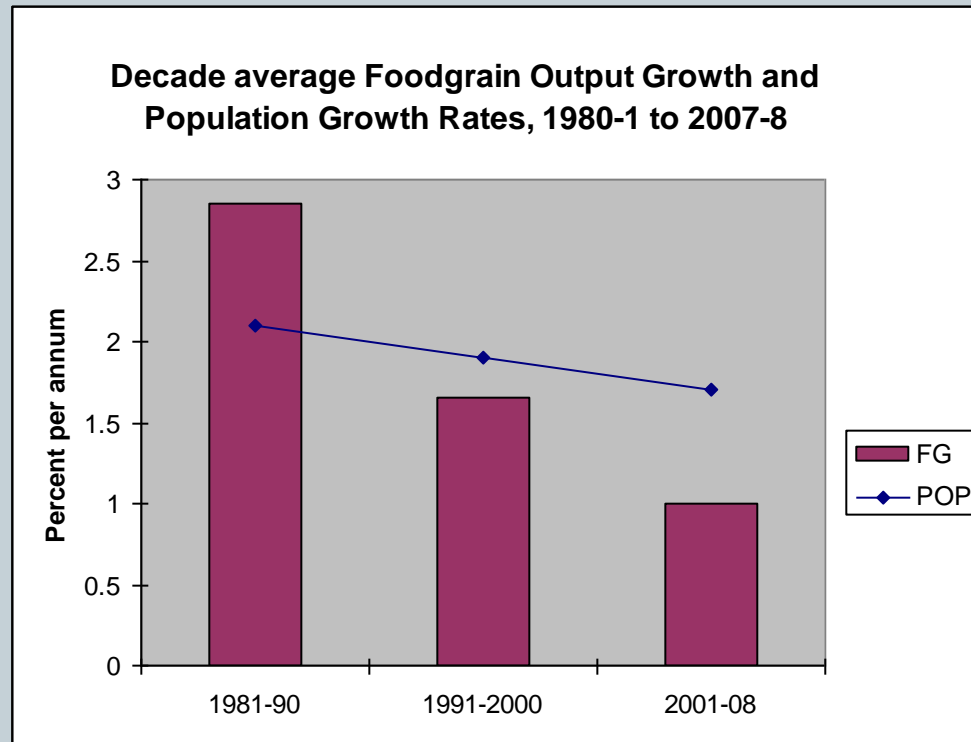
**Farmer Suicide Rate compared with General Suicide Rate, Census 2001**



# Chart 8 Direct, Indirect and Total Demand for Grain with Rising Income



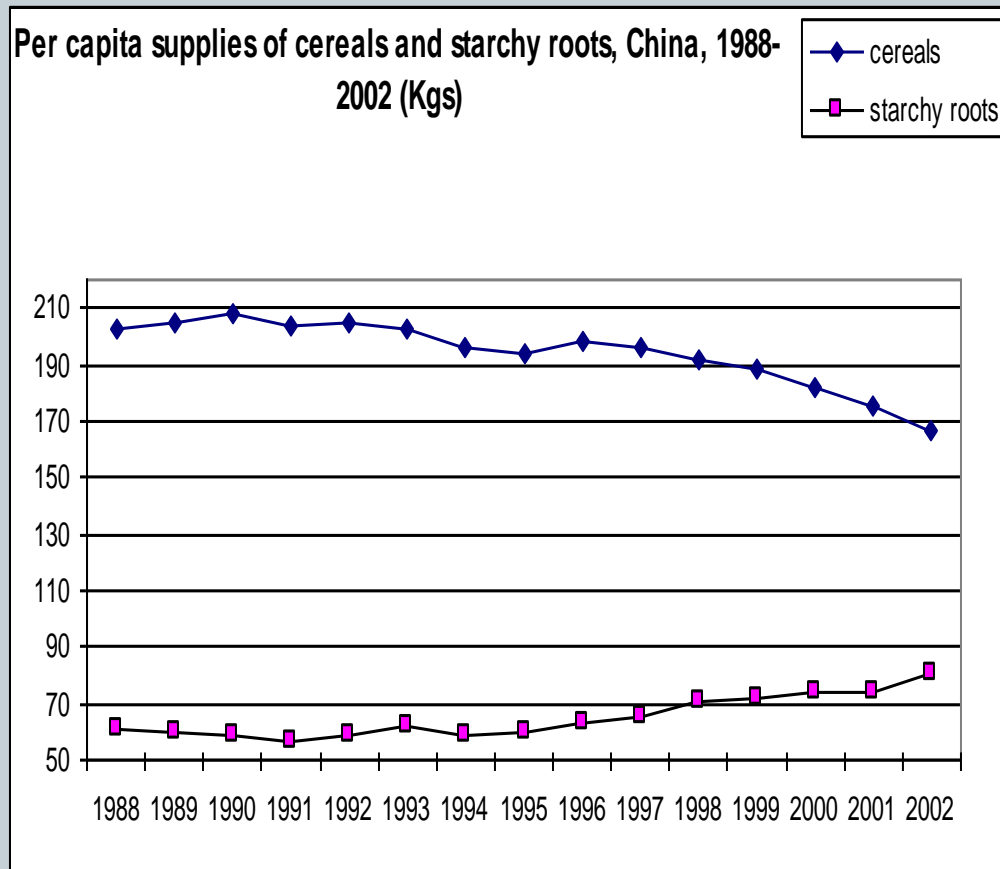
# Chart 9a Decadal average Foodgrains Growth rate and Population Growth rate, 1981 to 2008



Note : Output is Net Output = 0.87.5 times Gross Output

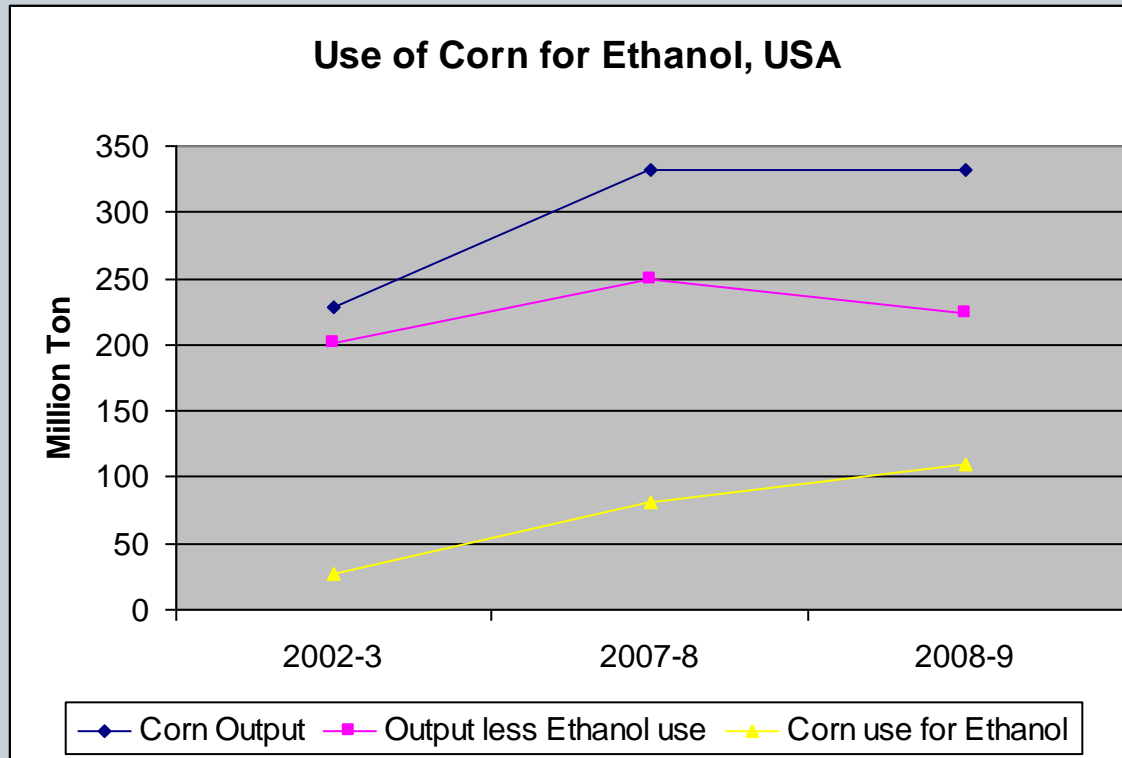
Availability = Net Output + Net Imports – Net Addition to Public Stocks. Both variables divided by total population for per capita values. Chart updated to 2007-08 from Patnaik, 2007b

# Chart 9c Output per Capita per annum of Cereals and Starchy Roots in China, 1988 to 2002, in Kilograms





# Chart 9d Use of Corn for Ethanol, USA 2002-3 to 2008-9



**Table 3 The Rural poor as Percent of Rural Population,  
1993-4 to 2009-10**

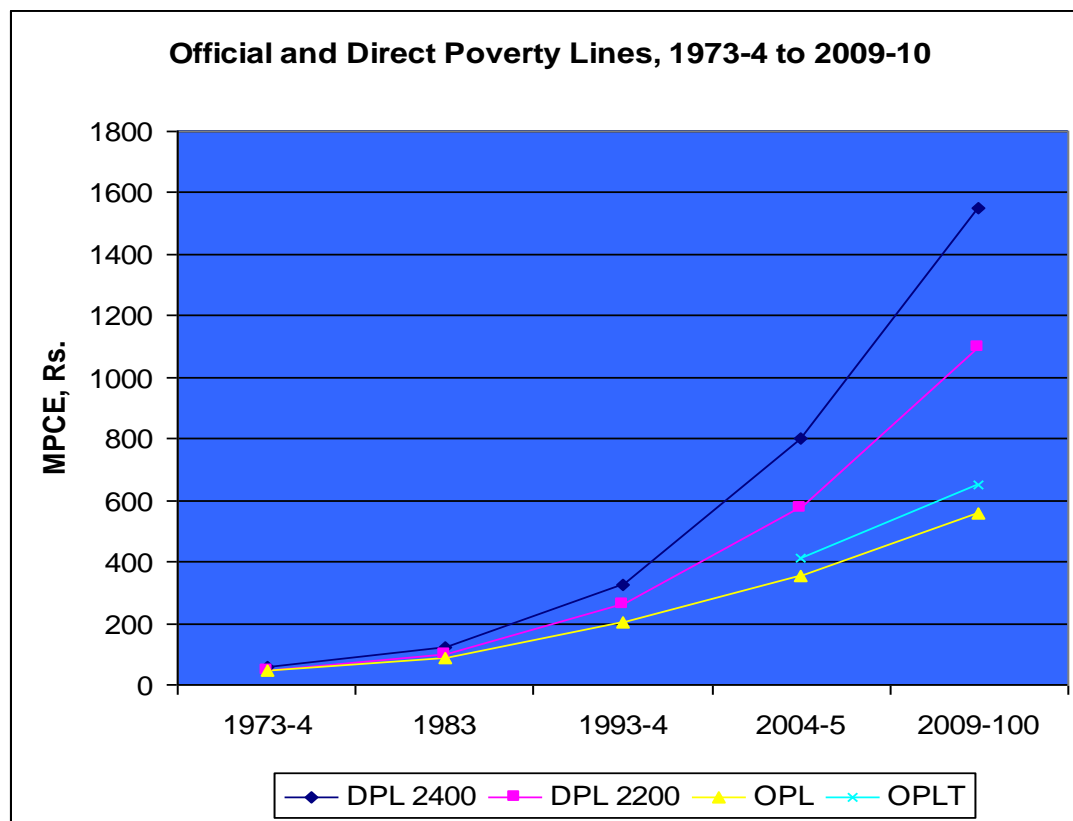
NSS Round	50th <b>1993-4</b>	61st <b>2004-5</b>	66th <b>2009-10</b>
1..Direct Poverty Line			
DPL, <b>at 2200 calories</b>	325	<b>575</b>	<b>1100</b>
2.Official Poverty Line			
OPL, Rs.	206	356 (414)	(673)
3.Direct Poverty Ratio			
DPR, %	<b>58.5</b>	<b>69.5</b>	<b>75.5</b>
4.Official Poverty Ratio			
OPR, %	<b>37.3</b>	<b>28.3</b> (41.5)	<b>33.8</b>
5.Calorie Intake @ OPL	1980	1820(1950)	1880
6. Deficit of Calorie Intake from norm	- <b>420</b>	- <b>580</b> (-450)	- <b>520</b>

# Official Poverty Lines are large underestimates



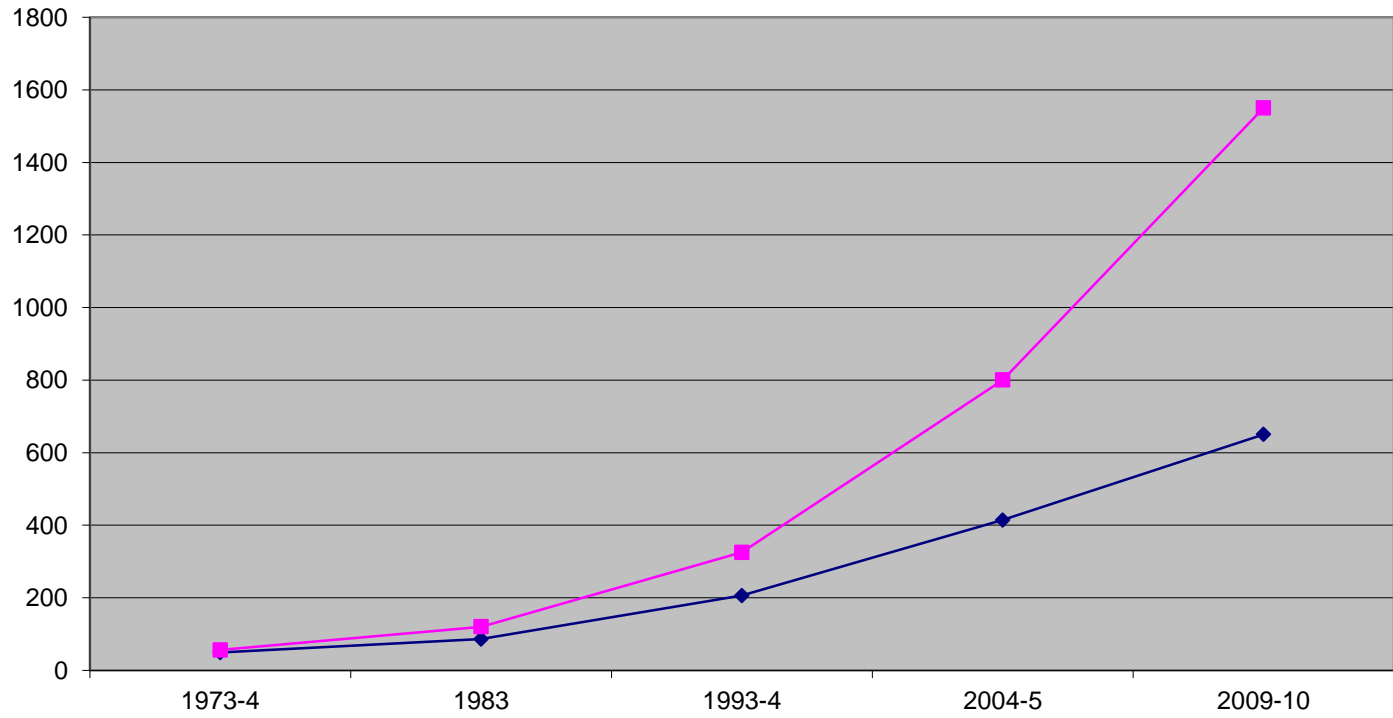
- **2004-5 Official Poverty Lines (for meeting a nutrition norm plus all other observed consumption)**
- ***RURAL*** Rs 356 per month, Rs.11.87 per Day (1820 calories)
- Revised: Rs.415 per month, Rs. 13.83 per day (1,930 calories)
- ***URBAN*** Rs. 538.6 per month, Rs. 18 per Day ( 1,795 calories ) Not revised

## Chart 10a Official and Directly estimated Poverty Lines, All-India Rural, 1973-4 to 2009-10 .



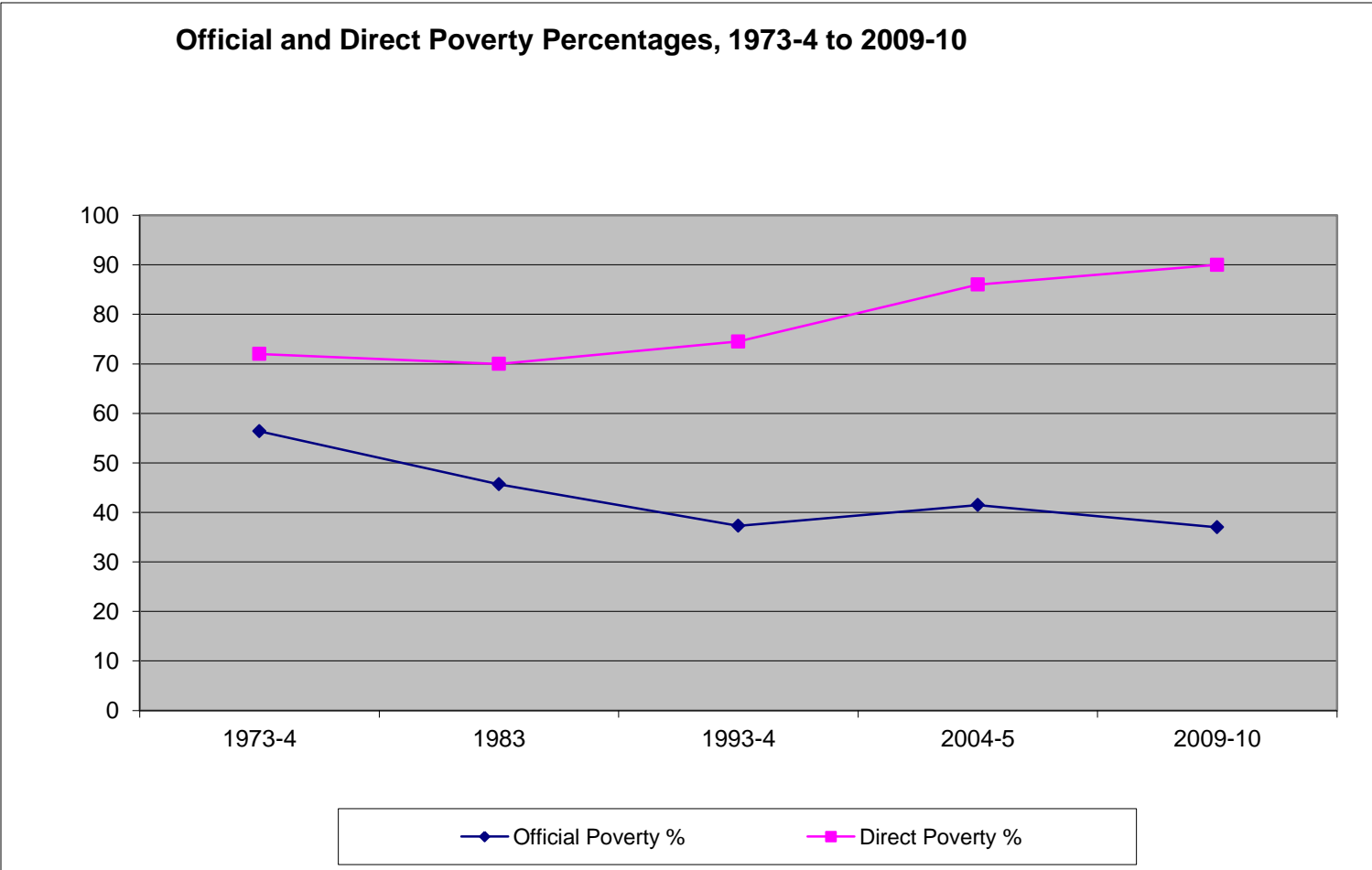
Source: Table 1 lines 1 and 5. Official poverty lines update the cost of a 1973-4 basket while direct poverty lines apply the official nutrition norm to the current data at each point of time

**Official and Direct Nutrition-invariant Poverty lines, 1973-4 to 2009-10**

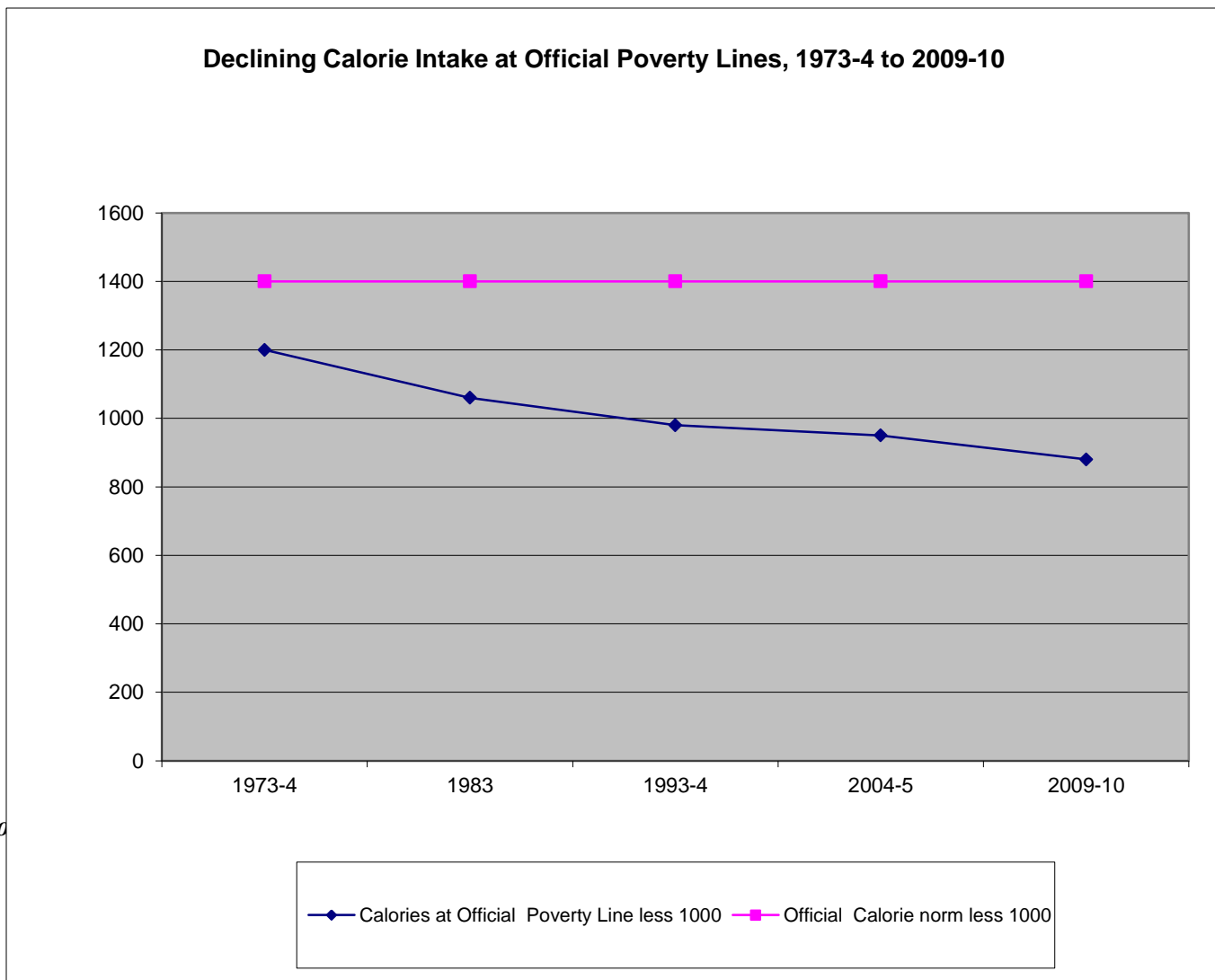


—◆— Official Poverty Line      —■— Direct Poverty Line

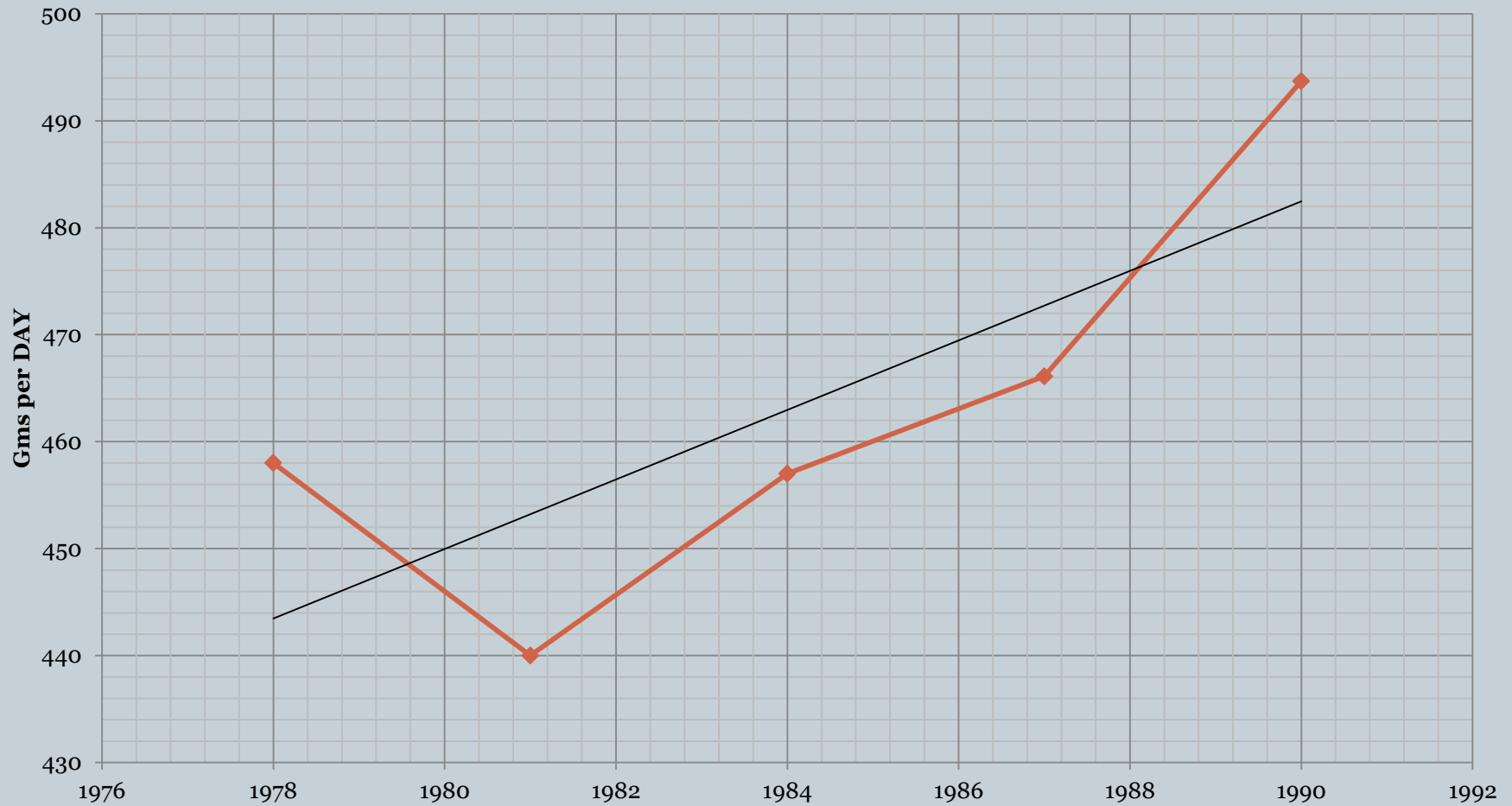
**Chart 10b Official and Directly estimated percent of Persons in Poverty, All-India Rural, 1973-4 to 2009-10**



# Chart 10c Declining Calorie Intake accessible at Official Poverty Lines, All-India Rural 1973-4 to 2009-10

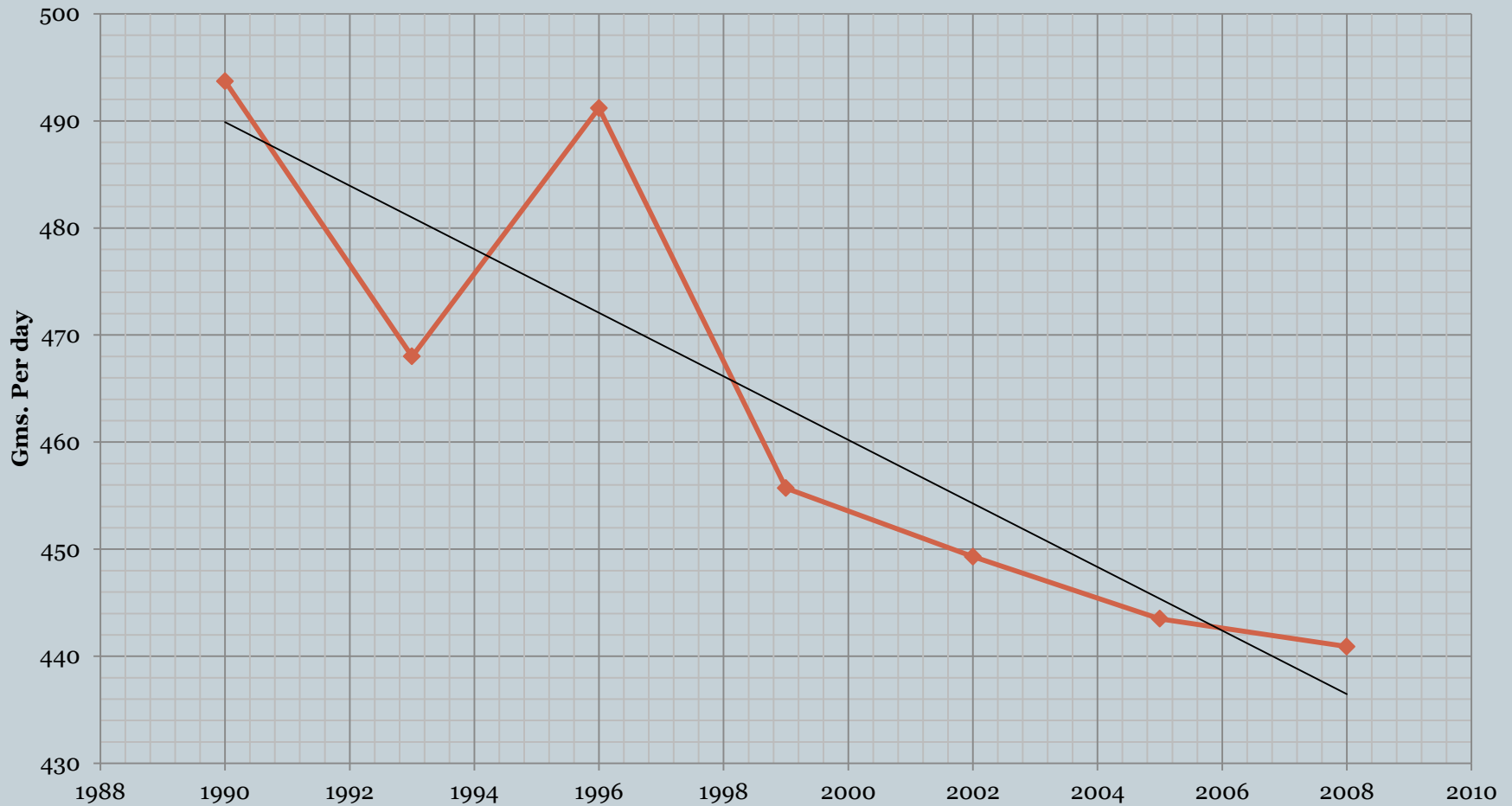


# Chart 11 Per Capita Daily Availability of Food grains in Gm. India 1977 to 1991





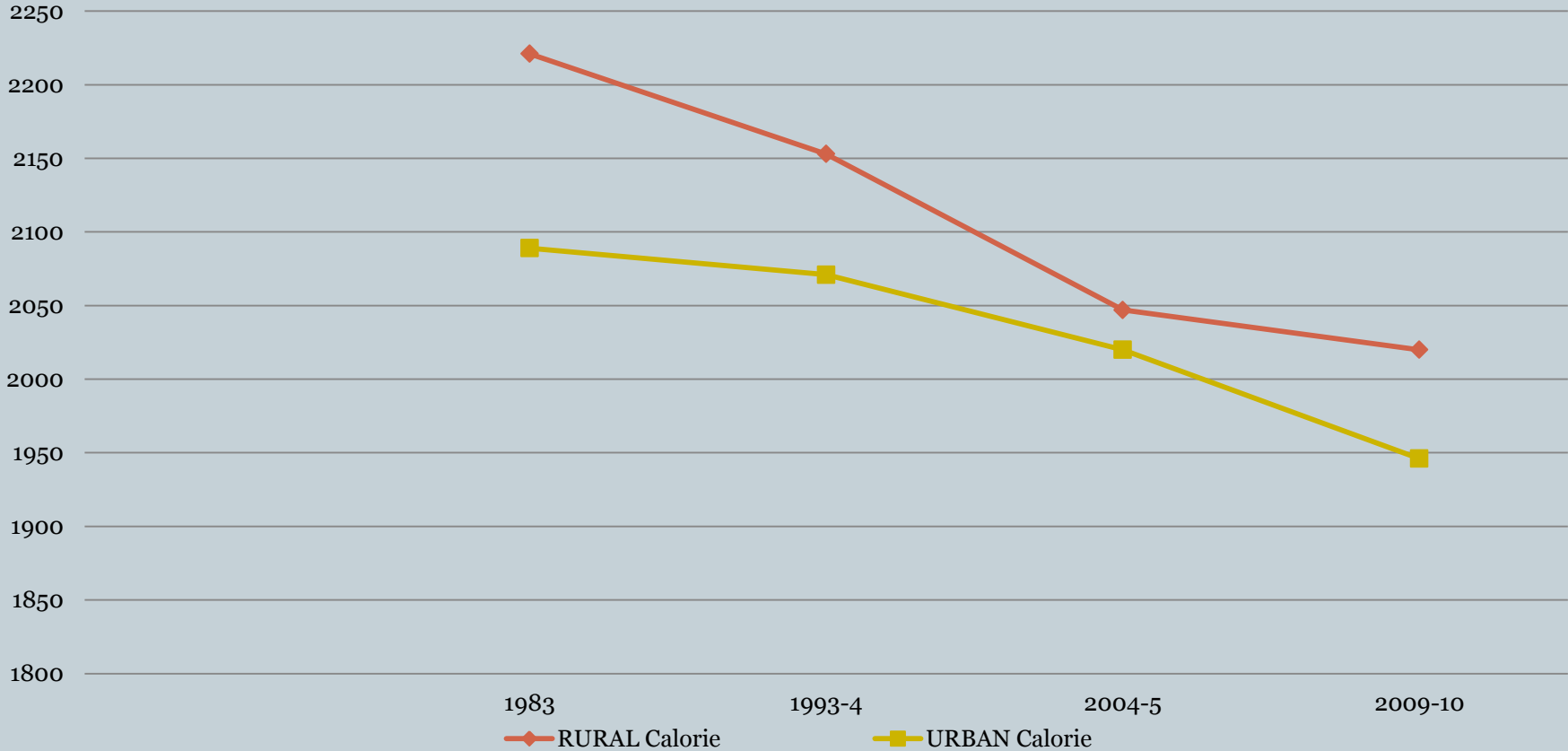
# Chart 12 Per Capita Daily Availability of Foodgrains in Gms India 1989 to 2009



# Decline in Rural and Urban per Capita Calorie Intake 1983 to 2009-10



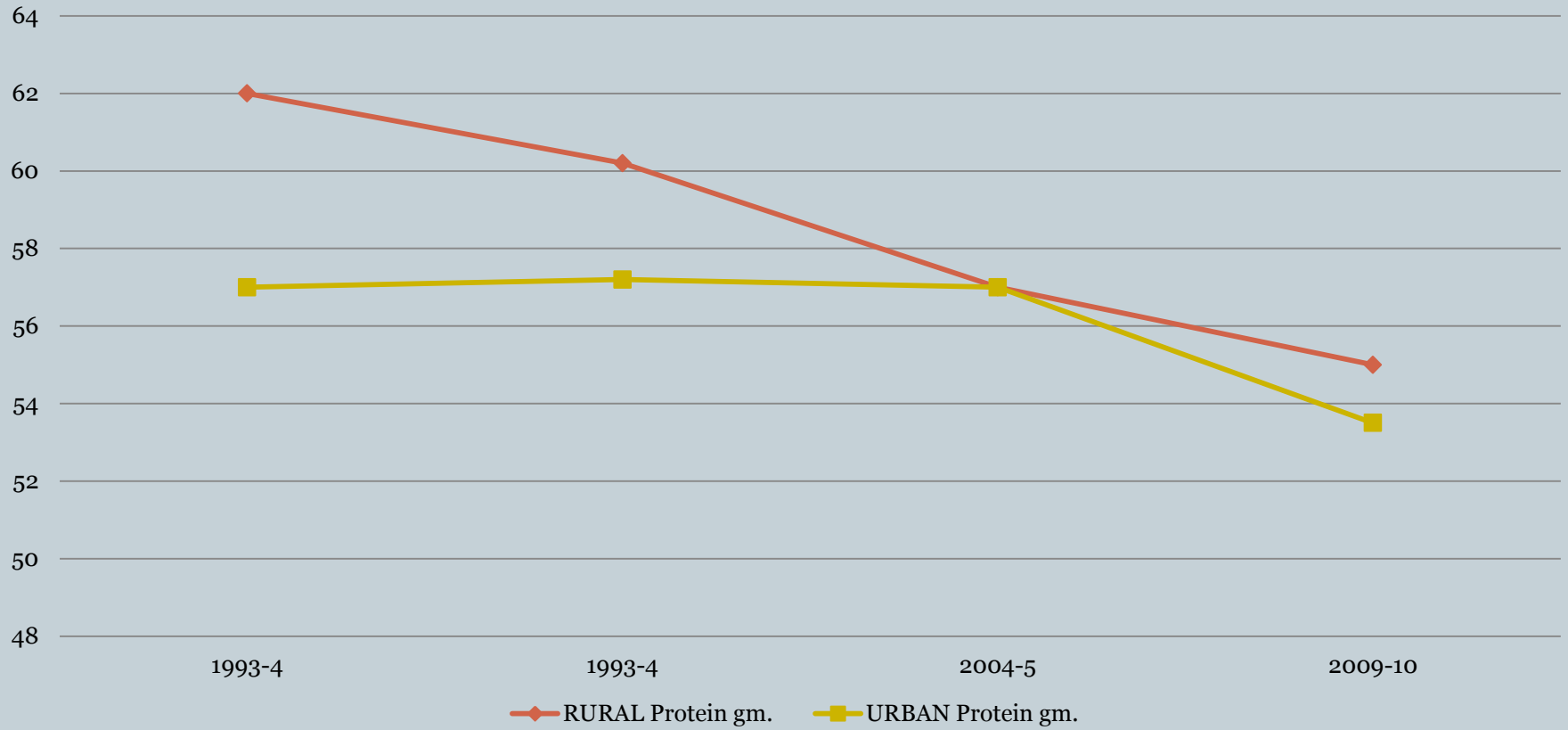
**Trend in Rural and Urban Calorie Intake per Capita 1983 to 2009-10**




# Rural and Urban per capita daily Protein Intake in gm. 1983 to 2009-10



**Trend in Rural and Urban per capita daily Protein Intake in gm. 1983 to 2009-10**



## *Direct and Official Poverty Estimates All-India Rural, 2009-10*



• <b>1. Calorie Intake Level</b>	<b>2400</b>	<b>2200</b>	<b>2100</b>	<b>1800</b>
• <b>2. Required MPCE , Rs. (Direct Poverty Line DPL)</b>	<b>1580</b>	<b>1097</b>	<b>925</b>	<b>610</b>
• <b>3. Percent of Persons Below DPL</b>	<b>90.5</b>	<b>75.5</b>	<b>62</b>	<b>25</b>
• <b>4. Official Poverty Line OPL</b>			<b>672.8</b>	
• <b>5. Percent of 'Poor' Persons</b>				<b>33.8</b>
• <b>6. Calorie Intake at OPL</b>				<b>1870</b>

# *Direct and Official Poverty Estimates All-India Urban 2009-10*



• <b><i>1. Calorie Intake Level</i></b>	<b><i>2400</i></b>	<b><i>2200</i></b>	<b><i>2100</i></b>	<b><i>1800</i></b>
• <b><i>2. Required MPCE , Rs</i></b>				
• <b><i>(Direct Poverty Line DPL)</i></b>	<b><i>5300</i></b>	<b><i>2700</i></b>	<b><i>2125</i></b>	<b><i>1025</i></b>
• <b><i>3. Percent of Persons</i></b>				
• <b><i>Below DPL</i></b>	<b><i>95</i></b>	<b><i>84</i></b>	<b><i>73</i></b>	<b><i>32</i></b>
• <b><i>4. Official Poverty Line OPL</i></b>				<b><i>863</i></b>
• <b><i>5. Percent of 'Poor'</i></b>				<b><i>20.9</i></b>
• <b><i>6. Calorie intake at OPL</i></b>				<b><i>1720</i></b>

# Change in Household Landownership, 1992 to 2003, Andhra Pradesh



Percent of Total Households	Percent of Total Owned Area		CHANGE
	1992	2003	
60	12	3.5	-8.5
25	24	23.5	-0.5
15	64	73	9
10	28	30	2
5	36	43	7